

# 2020 FALL SEED GUIDE

Brought to you by the  
University of Nebraska Variety  
Testing Program

- University of Nebraska - Lincoln Extension
- Institute of Agriculture and Natural Resources
- Department of Agronomy & Horticulture

# TABLE OF CONTENTS

Table of Contents.....	2
Authors and Acknowledgment.....	3
Winter Wheat Performance Summary.....	4-5
Wheat Trial Location Map.....	6
Monthly Precipitation at Trial Locations.....	6
Location Summary and Overview Table.....	7
Soil Type, Previous Crop, Fertilizers and Herbicides/Fungicides Applied.....	8
Entries and Company Information.....	9
Wheat Characteristics Tables.....	10-13
Wheat Variety Tests.....	14-29
Wheat Rankings at all locations.....	30-35
Winter Triticale Variety Tests.....	36
Winter Barley Variety Tests.....	37
Cheyenne County Winter Wheat Sawfly Ratings.....	38-39

# UNL EXTENSION CIRCULAR 103

## FALL SEED GUIDE

- August 2020 -

### AUTHORS

Cody Creech.....Department of Agronomy/Horticulture; Scottsbluff  
Amanda Easterly.....Department of Agronomy/Horticulture; Sidney  
P. Stephen Baenziger.....Department of Agronomy/Horticulture; Lincoln  
Brian Maust.....Department of Agronomy/Horticulture; Lincoln  
Stephen Wegulo.....Plant Pathology Department; Lincoln

### ACKNOWLEDGMENTS

This circular is a progress report of variety performance trials conducted by personnel of the Agronomy Department, West Central, and Panhandle Research and Extension Centers and their associated agricultural laboratories. Conduct of experiments and publication of results is a joint effort of the Agricultural Research Division and the Cooperative Extension Service. Tests were supported in part by fees paid by commercial seed companies and the Nebraska Wheat Board.

Special acknowledgment is made to farmer cooperators who furnished land for experiments; also to Extension Educators and others who assisted with the tests. The authors wish to acknowledge the assistance of the technical support staff: Stephen Geu, Greg Dorn, Mitch Montgomery, Gary Mahnken, Justin Richardson, Kenny Rhodes, Toby Spiehs, Robert Klein, Jake Hansen, and Bill Struckmeyer. Their help is vital to this research. Thanks to Ajay Singh and Greg Dorn for contributing photographs for the Seed Guide.

We would like to thank the Nebraska Wheat Board for contributing wheat check-off money and the Nebraska Agricultural Statistics Service for compiling data on varieties and production of wheat.

This circular reports data from winter wheat trials conducted throughout Nebraska. Entries include commercial varieties and promising experimental lines from Nebraska, surrounding states, and private breeders. The state has been divided into four districts for the purposes of variety testing (Panhandle, West Central, South Central, and East).

There were 18 trials planted across Nebraska in the fall of 2019. Names of cooperators, trial locations, planting dates, harvest dates, highest location mean yield, and mean of top five varieties are shown in Table A. Location specific information such as soil type, tillage, previous crop, and fertilizer applications when available are shown in Table B. Plot sizes varied with location. Six row wide and 20 to 35 feet long plots were planted across locations. All tests were direct combined. Entries were replicated 3 to 6 times. Yield values are corrected to 12% moisture.

Protein data were collected from two replicates at each location. The protein data was combined within each district and reported in the district tables. Protein was determined from whole grain using a Perten DA 7250 Near Infrared Spectrometer. Protein is corrected to 14% moisture, the correction factor used in most analytical standards. Please refer to the Variety Test Home Page for individual site yields, disease score, and other relevant information.

Spring wheat trials are in progress and results will be presented on the UNL Crop Variety and Hybrid Testing Program CropWatch page.

## WINTER WHEAT PERFORMANCE

According to the National Agricultural Statistics Service, winter wheat was sown on 0.92 million acres in Nebraska last year. 0.85 million acres were harvested producing a projected 44 million bushels of grain. The average winter wheat yield of Nebraska for all wheat harvested during the summer of 2020 was projected to be 51 bushels per acre (bu/ac). Winter wheat yields and production from the previous 10 years are reported below.

**Average Nebraska Winter Wheat Yield (all practices)**

Year	2011	2012	2013	2014	2015	2016	2017	2018	2019	2020
Yield (bu/a)	45	41	35	49	38	54	46	49	57	51
NE Total Production (million bu)	67	53	40	71	46	71	47	49	55	44

*Source: National Agricultural Statistics Service (<http://www.nass.usda.gov>)*

Yielding ability of different varieties cannot be measured with absolute accuracy because of variations in local disease incidence, soil fertility, seasonal rainfall or moisture, and other factors. For this reason, small differences in yield have no significance. Unless the difference in performance of two varieties is greater than the difference required for least significance difference (LSD) shown in the tables, little confidence can be placed in the superiority of one variety over the other for measured traits in that particular test. These differences are shown at the 10% level, meaning that differences as large or larger could be expected through chance alone in 1 of 10 trials (10%). Even though two varieties are not statistically different, there may be other factors which influence the choice of one over the other. Factors such as disease resistance, grain quality, agronomic desirability or availability of seed may influence that decision.

Complementary varieties are important when selecting additional varieties to grow. One definition of complementary varieties is that they come from diverse parentages. In order to help select varieties with diverse parentages, the related families of many varieties are included in the characteristics chart.

## RESULTS AT INDIVIDUAL LOCATIONS

### East:

There were four rainfed trials conducted in the Southeast District in Saunders, SaundersIM (Intensive Management) Lancaster, and Washington counties. Site specific management, soil type, and previous crops are shown in Table B.

- The Washington County Rainfed trial was planted on October 16th no-till into soybean stubble. 100 lb/A N, 24 lb/A K<sub>2</sub>O, and 10 lb/A S were applied in April. Miravis Ace fungicide was applied at flowering on June 4th. Plots were harvested on July 14th with a top yield of 86 bu/ac and an average yield of 74 bu/ac.
- The Saunders County Rainfed trial was planted on September 26th into disked ground previously in oats. 80 lb/A N was applied in the spring. Finesse herbicide was applied preplant and Prowl H<sub>2</sub>O plus 2,4-D herbicides were applied in April. Plots were harvested on July 13th with a top yield of 85 bu/ac and an average yield of 70 bu/ac.
- The SaundersIM County Rainfed trial was planted on September 26th, where the previous crop was oats. 40 lb/A N was applied at greenup and 80 lb/A N was applied at Feekes 5. Finesse herbicide was applied preplant and Prowl H<sub>2</sub>O plus 2,4-D herbicides were applied in April. Prosaro fungicide was applied by helicopter on June 5th. Plots were harvested on July 13th with a top yield of 86 bu/ac and an average yield of 72 bu/ac.
- The Lancaster County Rainfed trial was planted on September 26th into disked ground previously planted in oats. 70 lb/A N was applied preplant and 80 lb/A of N as liquid 28% was applied in the spring. Finesse + NIS were applied preplant and Prowl H<sub>2</sub>O plus 2,4-D herbicides were applied in the spring for weed control. Plots were harvested on July 10th with a top yield of 99 bu/ac and an average yield of 83 bu/ac.

### South Central:

Three rainfed trial was conducted in the South-Central District in Jefferson, Clay, and Harlan counties. Site specific management and previous crops are shown in Table B.

- The Jefferson County Rainfed trial was planted on October 23rd no-till into soybean stubble. 125 lb/A N and 11.5 lb/A S fertilizer were applied to the field in March. Harmony Extra herbicide and PropiStar fungicide were applied in April & Miravis Ace fungicide was applied by air on June 4th. Plots were harvested on July 17th with a top yield of 91 bu/ac and an average yield of 77 bu/ac.

- The Clay County Rainfed trial was planted on September 26th and harvested on July 12th with a top yield of 88 bu/ac and an average yield of 78 bu/ac. 150 lb/A of 11-52-0 was applied as a preplant fertilizer and 15 gal/ac of 10-32-0 was applied in the spring. 2,4-D was used for weed control.
- The Harlan County Rainfed trial was planted on September 23rd no-till into fallow and harvested on July 8th with a top yield of 94 bu/ac and an average yield of 66 bu/ac. 30 lb/A N, 20 lb/A P, 5 lb/A S, and 0.5 lb/A Zn fertilizer was applied in the fall and 70 lb/A N and 10 lb/A Zn in the spring. 2,4-D amine and Aim were used for weeds.

### West Central:

Five locations were planted in the West Central District. One irrigated trial was planted in Chase County. Rainfed trials were planted in Red Willow, Lincoln, Perkins, and Keith counties. Most rainfed sites were left fallow during the previous growing season with corn or wheat as the previous crop (Table B).

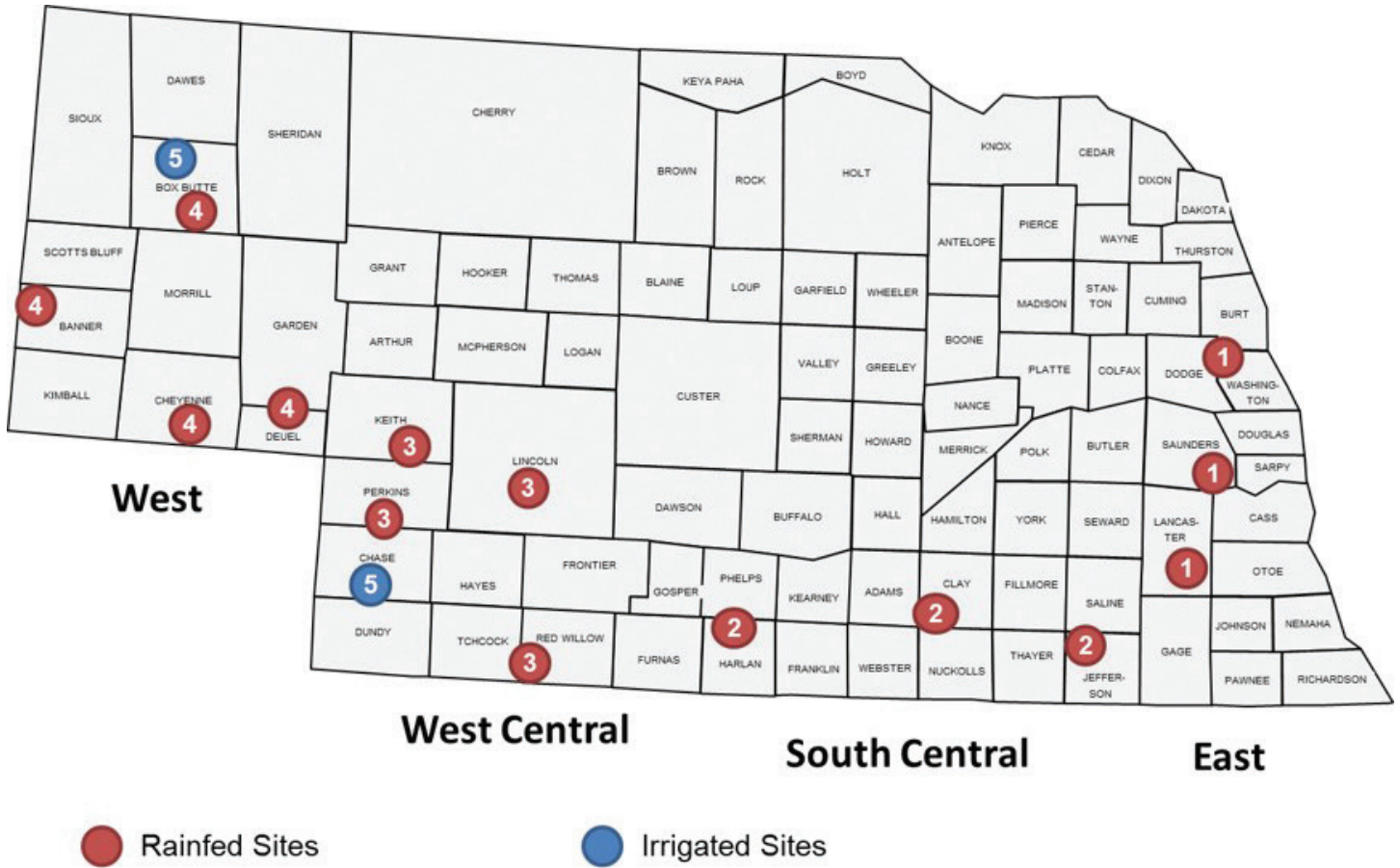
- The Chase County Irrigated trial was planted on September 27th into no-till ground previously cropped in dry beans. The plots were fertilized with 112 lb/A N, 56 lb/A P and 30 lb/A S. Powerflex HL and Barrage HF were used for weed control. Plots were harvested on July 11th with a top yield of 94 bu/ac and an average yield of 82 bu/ac.
- The Red Willow County Rainfed trial was planted on September 23rd into fallow. 91 lb/A N, 6 lb/A K, 13 lb/A S, 10 lb/A Cl, and 0.2 lb/A Zn were applied in April and 5 lb/A N was applied in May. Plots were harvested on July 6th with a top yield of 98 bu/ac and an average yield of 76 bu/ac.
- The Lincoln County Rainfed trial was planted on September 20th no-till into wheat stubble. 80 lb/A N fertilizer was applied at tillering. Prowl H2O herbicide was applied in the spring. Plots were harvested on July 13th with a top yield of 50 bu/ac and an average yield of 42 bu/ac.
- The Perkins County Rainfed trial was planted on September 19th no-till into fallow. Prowl H2O herbicide was applied in the spring. Plots were harvested July 8th with a top yield of 46 bu/ac and an average yield of 40 bu/ac.
- The Keith County Rainfed trial was planted on September 27th into fallow. 40 lb/A N was applied in the spring. Plots were harvested on July 10th with a top yield of 52 bu/ac and an average yield of 32 bu/ac.

### Panhandle (West):

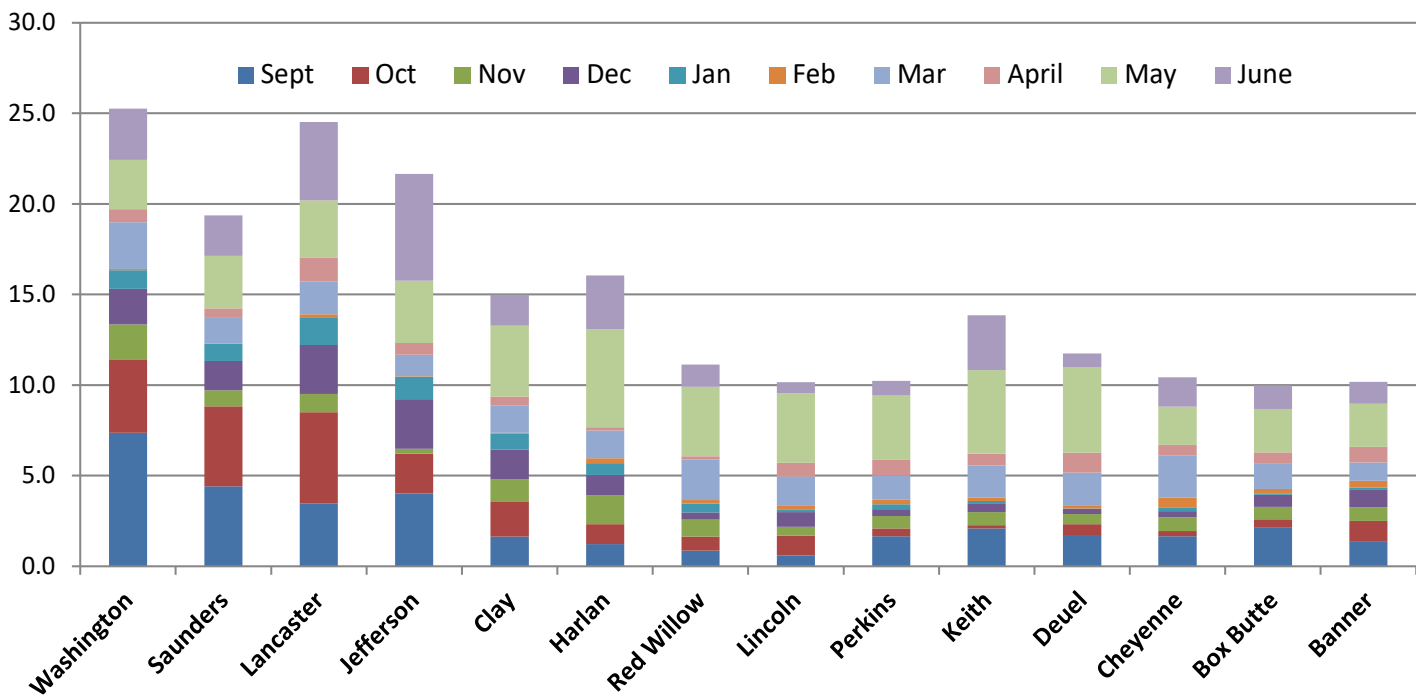
Six locations were planted in the Panhandle (West District). One irrigated trial was planted in Box Butte County. Rainfed trials were planted in Deuel, Cheyenne, CheyenneIM (Intensive Management), Box Butte, and Banner counties. All rainfed sites were left fallow the previous year (Table B).

- The Box Butte County Irrigated trial was planted on October 4th. A total of 148 lb/A N, 43 lb/A P, 24 lb/A S, and 1.1 lb/A Zn was applied. Fertilizer timings were at planting, early spring, and finished at boot. Onset was applied at heading. Plots were harvested July 27th with a top yield of 120 bu/ac and an average yield of 107 bu/ac.
- The Deuel County Rainfed trial was planted on September 19th into conventionally tilled fallow ground. 60 lb/A N and 5 lb/A S were applied in the spring. Olympus herbicide was applied in the spring for weed control. Plots were harvested on July 13th with a top yield of 43 bu/ac and an average yield of 34 bu/ac.
- The Cheyenne County Rainfed trial was planted on September 21st no-till into fallow. 70 lb/A N was applied preplant and 10 lb/A N in the spring. RoundUp and LV-6 herbicides were used preplant and LV-6 and Prowl H2O in the spring. Plots were harvested on July 24th with a top yield of 39 bu/ac and an average yield of 28 bu/ac.
- The CheyenneIM (Intensive Management) County Rainfed trial was planted on September 21st no-till into fallow. 70 lb/A N was applied preplant, 10 lb/A N in the spring, and 35 lb/A N at flag leaf. RoundUp and LV-6 herbicides were applied preplant and LV-6 and Prowl H2O in the spring. Plots were harvested on July 24th with a top yield of 46 bu/ac and an average yield of 36 bu/ac.
- The Box Butte County Rainfed trial was planted on September 18th into conventionally tilled fallow ground. 60 lb/A N, 30 lb/A P, 5 lb/A S, and 1 lb/A Zn fertilizer were applied preplant and 20 lb/A N was top-dressed in the spring. 2,4-D and Powerflex herbicides were used to control weeds and fungicide was top-dressed. Plots were harvested on July 16th with a top yield of 62 bu/ac and an average yield of 52 bu/ac.
- The Banner County Rainfed trial was planted on September 18th into fallow. 15 lb/A P was applied preplant and 30 lb/A N and 5 lb/A S were top-dressed in the spring. 2,4-D herbicide and propiconazole fungicide were applied in the spring. Plots were harvested on July 16th with a top yield of 64 bu/ac and an average yield of 56 bu/ac.

# 2020 WINTER WHEAT TRIAL LOCATIONS MAP



## 2020 WINTER WHEAT TRIAL SITE PRECIPITATION (inches)



**TABLE A - LOCATION SUMMARY FOR NEBRASKA  
WINTER WHEAT VARIETY TESTS - 2020**

Location	Cooperator	Latitude	Longitude	Dates		Location Mean Yield (bu/a)	
				Plant	Harvest	Top Yield	Site Avg
<b>Southeast</b>							
Washington Rainfed	Aaron Ruwe; Herman, NE	41.655140	-96.348616	10/16/19	7/14/20	86.2	73.8
Saunders Rainfed	UNL ARDC; Ithaca, NE	41.165706	-96.406845	9/26/19	7/13/20	84.9	69.8
SaundersIM Rainfed	UNL ARDC; Ithaca, NE	41.165994	-96.406845	9/26/19	7/13/20	85.8	71.8
Lancaster Rainfed	UNL Havelock Farm; Lincoln, NE	40.853712	-96.608510	9/26/19	7/10/20	99.2	82.8
<b>South Central</b>							
Jefferson Rainfed	Mark Knobel; Fairbury, NE	40.214512	-97.160652	10/23/19	7/17/20	91.2	77.2
Clay Rainfed	South Central Res & Ext Center; Harvard, NE	40.573056	-98.129444	9/26/19	7/7/20	87.7	77.5
Harlan Rainfed	Terry Woollen; Alma, NE	40.132412	-99.380689	9/23/19	7/8/20	93.9	66.1
<b>West Central</b>							
Red Willow Rainfed	Randy Peters; McCook, NE	40.156667	-100.806389	9/23/19	7/6/20	97.7	76.4
Lincoln Rainfed	UNL WCREC Dryland Farm; North Platte, NE	41.053922	-100.749955	9/20/19	7/13/20	50.4	41.7
Perkins Rainfed	UNL Stumpf International Wheat Center; Grant, NE	40.848965	-101.687143	9/19/19	7/8/20	45.7	39.9
Keith Rainfed	UNL WCREC Water Resource Lab; Brule, NE	41.163115	-102.005941	9/27/19	7/10/20	51.5	31.7
<b>Panhandle (West)</b>							
Deuel Rainfed	Larry Flohr; Chappell, NE	41.174807	-102.247171	9/19/19	7/13/20	42.7	34.3
Cheyenne Rainfed	UNL High Plains Ag Lab; Sidney, NE	41.235940	-103.002158	9/21/19	7/24/20	38.6	27.8
CheyenneIM Rainfed	UNL High Plains Ag Lab; Sidney, NE	41.235944	-103.001877	9/21/19	7/24/20	45.6	36.4
Box Butte Rainfed	Cullan Farms; Hemingford, NE	42.246916	-103.014953	9/18/19	7/16/20	62.1	51.8
Banner Rainfed	Jim Wyatt; Harrisburg, NE	41.566797	-103.728659	9/18/19	7/16/20	63.5	56.2
<b>Irrigated</b>							
Box Butte Irrigated	Tom Cullan; Hemingford, NE	42.287125	-103.032507	10/4/09	7/27/20	120.5	106.8
Chase Irrigated	Brian Yutzy; Imperial, NE	40.467487	-101.507615	9/27/19	7/11/20	93.8	81.8

**TABLE B - SOIL TYPE, PREVIOUS CROP, FERTILIZERS AND HERBICIDES/ FUNGICIDES APPLIED TO NEBRASKA WINTER WHEAT VARIETY TESTS**

Location	Soil Type	Tillage System	Previous Crop(s)	Fertilizer	Herbicide/Fungicide
<b>Southeast</b>					
Washington Rainfed	Alcester silty clay loam	No-till	Soybean	200 lbs of 46-0-0 urea, 40 lbs of 21-0-0-24S (AMS) and 40 lbs of 0-0-60 Potash on April 7th	Miravis Ace flown on with a helicopter on June 4th
Saunders Rainfed	Filbert & Tomek silt loam	Disked	Oats	80 lb/A N as 46-0-0 applied at greenup	1/3 oz/a Finesse applied in Sept, 2 pt/a Prowl H2O + 0.5 pt/a 2,4-D in April
SaundersIM Rainfed	Filbert & Tomek silt loam	Disked	Oats	40 lb/A N as 46-0-0 applied at greenup and 80 lb/A N applied at Feekes 5.	1/3 oz/a Finesse applied in Sept, 2 pt/a Prowl H2O + 0.5 pt/a 2,4-D in April, 8 oz/ac ProSaro on June 5th
Lancaster Rainfed	Crete and Butler silt loam	Disked	Oats	70 lb/A N applied preplant and 80 lb/A of N with liquid 28% applied in spring.	Finesse + NIS applied preplant and 2 pt/a Prowl H2O + 1 pt/a 2,4-D applied in spring
<b>South Central</b>					
Jefferson Rainfed	Crete silt loam	No-till	Soybean	125 lb/A N & 11.5 lb/A S applied in March	0.75 oz/a Harmony Extra + 4 oz/a PropiStar applied in April & Miravis Ace applied by air on June 4th
Clay Rainfed	Crete silt loams	Conventional		150 lb/acre 11-52-0 preplant; 15 gal/acre 10-32-0 in spring	2,4-D
Harlan Rainfed	Holdrege silt loam	No-till	Fallow (corn)	30 lb/A N, 20 lb/A P, 5 lb/A S, & 0.5 lb/A Zn applied in the Fall and 70 lb/A N & 10 lb/A Zn in Spring	12 oz/a 2,4-D amine & 0.50 oz/a Aim
<b>West Central</b>					
Red Willow Rainfed	Keith silt loams	Minimum till	Fallow (corn)	91 lb N, 6 lb K, 13 lb S, 10 lb Cl, 0.2 Zn in April; 5 lb N in May	0.56 oz Amber fall applied, 8 oz Nexicor in May
Lincoln Rainfed	Holdrege silt loam	No-till	Wheat	80 lb N at tillering	Prowl H2O (1.75 pt/acre) in spring
Perkins Rainfed	Ascalon fine sandy loam & Kuma silt loam	No-till	Fallow (corn)	NA	Prowl H2O (1.75 pt/acre) in spring
Keith Rainfed	Kuma & Sulco loam	Minimum till	Fallow (wheat)	40 lb N spring	NA
<b>Panhandle (West)</b>					
Deuel Rainfed	Johnstown-Satanta-Richfield loams	Conventional	Fallow (wheat)	40 lb 28-0-0-5 in March followed by 20 lb 32-0-0 with herbicide application	Olympus mid-spring
Cheyenne Rainfed	Alliance loam	No-till	Fallow (corn)	70 lbs 32-0-0 preplant; 10 lbs 32-0-0 with LV-6 application	RoundUp and LV-6 preplant burn-down; LV-6 and Prowl H2O in spring
CheyenneIM Rainfed	Alliance loam	No-till	Fallow (corn)	70 lbs 32-0-0 preplant; 10 lbs 32-0-0 with LV-6 application; additional top-dress at flag leaf of 35 lb 32-0-0	RoundUp and LV-6 preplant burn-down; LV-6 and Prowl H2O in spring; Trivapro at heading
Box Butte Rainfed	Rosebud loam	Conventional	Fallow (corn)	60 lb N, 30 lb P, 5 lb S, 1 lb Zn fall preplant; 20 lb N topdress in spring	2,4-D, Powerflex, fungicide with topdress
Banner Rainfed	Bridget very fine sandy loam	Conventional	Fallow (millet)	15 lb P pre-plant; 30 lb N, 5 lb S topdress in spring	2,4-D and propiconazole in spring
<b>Irrigated</b>					
Box Butte Irrigated	Alliance-Rosebud loam	Tilled	Dry Beans	A total of 148 lb N, 43 lb P, 24 lb S, & 1.1 lb Zn was applied split between planting, early spring, and at boot	Affinity and 4 oz of Onset at heading
Chase Irrigated	Goshen silt loam	No-till	Dry Beans	112lb/A N, 56 lb/A P, 30lb/A S	Powerflex HL & Barrage HF



## TABLE C - ENTRIES AND CONTACT INFORMATION

The entrant should be contacted for information on seed availability, adaptation and agronomic characteristics.

<p><b>AgriMaxx Wheat Company</b> 7167 Highbanks Road Mascoutah, IL 62258 agrimaxxwheat.com</p>	<p>AM Cartwright, AM Eastwood</p>	
<p><b>AgriPro - Syngenta</b> 11783 Ascher Rd. Junction City, KS 66441 agriprowheat.com</p>	<p>Spur, AP 18AX, SY 517 CL2, SY Benefit, SY Legend CL2, SY Monument, SY Rug- ged, SY Sunrise, SY Wolverine</p>	
<p><b>CROPLAN by Winfield United</b> 4001 Lexington Ave. N Arden Hills, MN 55126 croplan.com</p>	<p>CP7010, CP7869, CP7909, CP7050AX, CP7017AX</p>	
<p><b>Dyna-Gro Seed</b> 5300 Braemer Rd. Lincoln, NE 68516 dynagroseed.com</p>	<p>Long Branch</p>	
<p><b>Husker Genetics</b> 1071 County Rd G Ithaca, NE 68033 huskergenetics.unl.edu</p>	<p>Freeman, Goodstreak, Overland, Panhan- dle, Pronghorn, Robidoux, Ruth, Wesley</p>	
<p><b>Kansas Wheat Alliance</b> 1990 Kimball Ave. Ste 200 Manhattan, KS 66502 kswheatalliance.org</p>	<p>KS Dallas, KS Western Star, Tatanka, Zenda</p>	
<p><b>Limagrain Cereal Seeds</b> 6414 N. Sheridan Wichita, KS 67204 limagraincerealseeds.com</p>	<p>LCS Chrome, LCS Link, LCS Valiant</p>	
<p><b>PlainsGold</b> Colorado State University Fort Collins, CO 80523 plainsgold.com</p>	<p>Breck, Canvas, Crescent AX, Fortify SF, Guardian, Langin, Monarch, Whistler</p>	
<p><b>WestBred</b> 800 N. Lindbergh Ave. St. Louis, MO 63167 westbred.com</p>	<p>WB4269, WB4303, WB4401, WB4418, WB4462, WB4595, WB4699, WB4792, WB-Grainfield</p>	

# WINTER WHEAT VARIETY CHARACTERISTICS 2020 (PAGE 1/2)

Variety	Origin	Family	Maturity	Winter Hardiness	Straw Strength	Plant Height	Coleoptile Length	
AM Cartwright	KSU	--	--	--	--	--	--	
AM Eastwood	LCS	--	1	4	6	2	5	
AP 18AX	Syngenta	--	2	3	4	4	5	
Breck	CSU/CWRF	Denali/HV9W07-482W//Antero	3	4	4	5	6	
Canvas	CSU/CWRF	--	3	4	5	3	5	
CP7010	CROPLAN	--	--	--	--	--	--	
CP7017AX	CROPLAN	--	--	--	--	--	--	
CP7050AX	CROPLAN	--	--	--	--	--	--	
CP7869	CROPLAN	--	4	1	2	3	5	
CP7909	CROPLAN	--	--	--	--	--	--	
Crescent AX	CSU/CWRF	--	2	4	4	6	6	
Fortify SF	CSU/CWRF	--	3	4	1	6	6	
Freeman	NE	(ABI86*3414/JAG//K92)/ALLIANCE	3	5	3	2	2	
Goodstreak	NE	Colt	3	4	4	8	9	
Guardian	CSU/CWRF	--	3	4	3	5	5	
KS Dallas	KSU	--	3	5	3	5	7	
KS Western Star	KSU	Byrd	3	5	5	5	7	
Langin	CSU/CWRF	Byrd, Hatcher	2	5	3	2	4	
LCS Chrome	Limagrain	--	4	4	5	7	5	
LCS Link	Limagrain	Diverse	4	4	6	3	--	
LCS Valiant	Limagrain	Camelot	1	4	5	3	--	
Long Branch	Kansas	Kansas	4	5	4	7	n/a	
Monarch	CSU/CWRF	--	3	4	6	3	5	
NE14434	USDA-NE	Freeman	3	5	4	5	--	
NE14691	NE	--	--	--	--	--	--	
NE14696	NE	--	--	--	--	--	--	
NE15410	NE	--	--	--	--	--	--	
NE15420	USDA-NE	unique	2	5	3	2	--	
NE15624	NE	--	--	--	--	--	--	
NE16562	NE	--	--	--	--	--	--	
NHH144913-3	USDA-NE	Brawl CL Plus	3	5	5	5	--	
NW13493	NE	Diverse, sib of NW13570	2	4	4	4	--	
NW15443	NE	--	--	--	--	--	--	
			1 = Early 5 = Late	1 = Tender 5 = Hardy	1=Weak 6=Strong	1 = Short 9 = Tall	1 = Short 9 = Long	

	Hessian Fly	Leaf Rust	Stem Rust	Stripe Rust	Tan Spot	Soil Borne	Wheat Streak Mosaic	Bushel Weight	Grain Protein	Target Environment in Nebraska	Other Information
	--	--	--	--	--	--	--	--	--		
	n/a	7	1	2	3	1	4	3	3		
	--	5	--	3	--	--	3	3	--		
	--	5	2	2	--	--	5	1	1	Identity Preserve	High Test Weight
	--	6	2	2	--	--	3	3	5	Dryland/Irrigated	Excellent Quality
	--	--	--	--	--	--	--	--	--		
	--	--	--	--	--	--	--	--	--		
	--	1	1	1	2	--	--	3	4		
	--	--	--	--	--	--	--	--	--		
	--	6	-	5	--	--	3	3	8	Grassy Weeds	CoAXium
	--	7	8	7	--	--	2	4	7	Sawfly acres	Semi-Solid
	Seg	6	2	4	--	1	9	6	5	All NE	
	6	8	3	--	--	9	9	2	4		
	--	3	2	2	--	--	2	2	1	WSMV Defense	Excellent Quality
	7	2	2	4	--	9	2	5	5	Western	
	9	3	5	3	--	1	5	3	6	Southern	TriMV tolerance
	--	7	8	3	--	1	7	4	6	Dryland	Tillers well
	--	2	9	1	2	2	--	3	3		
	--	4	2	2	--	1	7	2	--		
	4	5	3	6	--	1	8	2	--		
	1	7	4	3	n/a	8	n/a	n/a	n/a	Irrigated & Dryland	
	--	5	2	3	--	1	4	4	8	Identity Preserve	Very Low PPO
	8	3	2	5	--	1	7	2	--	All of Nebraska	
	1	7	1	3	--	1	--	--	--		
	9	5	3	3	--	1	--	--	--		
	9	9	2	5	--	5	--	--	--		
	8	3	2	3	--	1	7	3	--	Irrigated production	
	9	7	3	5	--	1	--	--	--		
	1	3	1	9	--	1	--	--	--		
	8	3	3	3	--	1	7	5	--	All of Nebraska	
	9	3	1	2	--	1	7	3	--		
	4	9	1	7	--	5	--	--	--		
	1 = Resistant 9 = Susceptible Seg = Segregating							1 = High 9 = Low			

# WINTER WHEAT VARIETY CHARACTERISTICS 2020 (PAGE 2/2)

Variety	Origin	Family	Maturity	Winter Hardiness	Straw Strength	Plant Height	Coleoptile Length	
Overland	NE	Millennium, Wahoo	4	5	5	5	--	
Panhandle	NE	NE97426 /NE98574	4	4	4	7	7	
Pronghorn	NE	Colt	3	4	3	8	9	
Robidoux	NE	Wahoo, Millennium	3	4	--	5	6	
Ruth	NE	OK98697/'/ Jagalene'/'/Camelot	4	4	4	5	7	
Scout 66	NE	Ponca	3	3	1	9	8	
Settler CL	NE	Infinity, Millennium, Wesley	3	5	--	1	6	
Siege	NE	Robidoux	4	4	5	3	--	
Spur	APSY/Montana State	MT2113*4/MTS0359	4.5	4	5	4	unk	
SY 517 CL2	Syngenta	--	3	2	3	4	5	
SY Benefit	Syngenta	KS94-786-6-9/Jagalene:1//Art	3	4	3	4	5	
SY Legend CL2	Syngenta	--	3	3	3	5	5	
SY Monument	Syngenta	--	4	4	3	6	5	
SY Rugged	Syngenta	Greer x Doans	2	3	3	2	5	
SY Sunrise	Syngenta	--	4	4	5	2	5	
SY Wolverine	Syngenta	--	2	4	4	4	5	
Tatanka	KSU	Jagger	3	5	3	6	5	
Turkey	Ukraine	--	5	4	2	9	9	
WB4269	Bayer	--	1	4	4	3	5	
WB4303	Bayer	--	2	3	6	4	5	
WB4401	Bayer	--	2	4	4	5	5	
WB4418	Bayer	--	3	4	6	4	6	
WB4462	Bayer	--	2	5	3	7	6	
WB4595	Bayer	--	3	5	5	5	6	
WB4699	Bayer	--	3	4	5	3	5	
WB4792	Bayer	--	4	5	5	6	6	
WB-Grainfield	Bayer	KSU	2	5	3	5	5	
Wesley	ARS-NE	Sumner	3	5	5	2	1	
Whistler	CSU/CWRF	Byrd, Snowmass	5	4	2	7	4	
Zenda	KSU	Everest	3	5	5	5	6	
			1 = Early 5 = Late	1 = Tender 5 = Hardy	1=Weak 6=Strong	1 = Short 9 = Tall	1 = Short 9 = Long	

	Hessian Fly	Leaf Rust	Stem Rust	Stripe Rust	Tan Spot	Soil Borne	Wheat Streak Mosaic	Bushel Weight	Grain Protein	Target Environment	Other Information
	9	3	4	7	6	9	5	2	--	Western NE	
	9	6	3	8	--	4	9	6	8		
	9	7	3	--	--	9	9	5	5		
	9	8	1	4	--	3	9	5	--		
	5	8	1	3	--	1	9	1	4		
	9	7	5	8	9	9	7	4	5		
	9	5	4	8	--	1	5	--	--		
	3	4	2	2	--	1	7	2	--		
	--	--	Seg	--	--	--	--	4	--		Solid Stem
	--	3	--	6	4	1	--	2	--		
	--	8	3	4	4	6	--	3	3		FHB (Scab) tolerance
	-	--	1	--	--	1	-	3	-		2 Gene Herbicide tolerance
	--	2	1	2	5	1	--	3	3		
	--	2	1	2	5	1	--	2	3		
	--	3	1	4	--	1	--	2	3		
	--	1	1	6	3	1	4	2	3		
	9	9	2	2	5	1	7	5	5	Western	
	9	7	7	9	--	9	5	3	1		
	8	2	3	2	7	3	9	--	--	Central; Eastern	
	6	3	1	6	7	1	4	--	--	Central; Eastern; Western Irrigated	
	5	5	4	3	5	2	7	--	--	Eastern; Central; Western; Irrigated	
	2	4	2	4	7	2	5	--	--	Central; Western; Irrigated	
	8	3	1	7	6	1	4	--	--	Western	
	6	4	3	4	6	--	5	--	--	Central; Western; Irrigated	
	5	3	2	4	4	3	5	--	--	Central; Eastern; Western Irrigated	
	4	2	--	4	6	9	5	--	--	Central; Western; Irrigated	
	8	8	1	3	5	1	6	--	--	Central; Western	
	9	8	1	7	5	1	9	7	4		
	--	5	1	2	--	1	1	7	5	Dryland	Tall
	5	3	2	4	5	1	7	5	5	Eastern	
	1 = Resistant 9 = Susceptible Seg = Segregating							1 = High 9 = Low			

# EAST DRYLAND WHEAT VARIETY TESTS - 2020

## WASHINGTON, SAUNDERS, SAUNDERS(IM), AND LANCASTER COUNTIES

Variety	Brand	Average Yield (bu/a)[1]	Washing ton Yield (bu/a)	Saunders Yield (bu/a)	Saunders IM Yield (bu/a)	Lancaster Yield (bu/a)	Bushel Weight (lb/bu)	Plant height (in)	Grain Protein (%) [2]
Ruth	Husker Genetics	87.0	78.2	84.9	85.8	99.2	60.7	36.3	13.0
Wesley	Husker Genetics	80.9	81.6	77.1	78.8	86.1	60.2	33.9	13.7
CP7869	CROPLAN by Winfield United	80.3	85.2	73.6	75.1	87.3	60.7	32.9	12.6
CP7017AX	CROPLAN by Winfield United	80.1	81.3	79.1	77.0	83.2	59.8	31.7	12.8
NW13493	UNL-Experimental	79.7	74.5	77.0	80.1	87.2	61.5	34.9	13.2
NHH144913-3	UNL-Experimental	79.4	80.2	74.1	75.3	87.9	57.3	34.2	13.6
WB4699	WestBred	78.6	58.0	74.0	83.6	98.9	59.6	29.6	11.9
Long Branch	Dyna-Gro Seed	78.6	86.2	73.3	72.2	82.7	59.2	33.6	12.8
WB4269	WestBred	76.9	71.6	78.8	76.8	80.5	59.4	31.3	12.7
NE14434	UNL-Experimental	76.4	80.6	67.1	66.4	91.3	59.2	36.3	12.8
NE15624	UNL-Experimental	75.9	70.9	71.2	73.0	88.5	60.2	32.0	13.5
WB4303	WestBred	75.1	74.1	70.7	76.3	79.5	57.4	31.1	13.8
Siege	NuPride Genetics	74.5	71.5	67.7	69.9	88.8	61.6	33.9	14.0
Freeman	Husker Genetics	73.8	77.3	71.1	68.4	78.4	58.6	34.1	13.2
CP7909	CROPLAN by Winfield United	73.8	76.1	71.7	69.3	78.0	60.3	32.4	13.0
LCS Valiant	Limagrain Cereal Seeds	73.7	74.2	66.8	71.1	82.6	60.7	32.0	14.2
AM Cartwright	AgriMaxx Wheat Company	73.2	67.8	65.7	73.6	85.8	59.3	33.3	14.1
CP7010	CROPLAN by Winfield United	72.9	68.1	65.8	71.1	86.7	62.2	31.4	13.3
NE16562	UNL-Experimental	72.1	73.1	63.4	66.1	85.9	58.4	32.6	13.4
Zenda	Kansas Wheat Alliance	71.9	64.6	63.9	71.9	87.5	60.8	34.2	13.8
CP7050AX	CROPLAN by Winfield United	69.3	66.5	66.1	65.4	79.4	60.6	31.9	14.7
Turkey	Check	56.2	64.4	52.9	52.4	55.2	59.2	42.9	14.9
Scout 66	Check	52.3	65.8	48.9	51.7	43.0	59.1	41.0	14.6
<b>Average of all entries</b>		<b>74.5</b>	<b>73.6</b>	<b>69.8</b>	<b>71.8</b>	<b>82.8</b>	<b>59.8</b>	<b>33.8</b>	<b>13.5</b>
<b>Standard deviation</b>		<b>7.5</b>	<b>.</b>	<b>.</b>	<b>.</b>	<b>.</b>	<b>1.2</b>	<b>3.1</b>	<b>0.7</b>
<b>LSD [3]</b>		<b>.</b>	<b>5.8</b>	<b>6.0</b>	<b>4.7</b>	<b>6.7</b>	<b>.</b>	<b>.</b>	<b>.</b>
<b>Coefficient of variation [4]</b>		<b>.</b>	<b>9.6</b>	<b>11.3</b>	<b>11.1</b>	<b>14.3</b>	<b>.</b>	<b>.</b>	<b>.</b>

[1] Yield values corrected to 12% moisture.

[2] Protein corrected to 14% moisture, the correction factor used in analytical standards.

[3] For differences between varieties that are equal to or greater than the LSD value, the chance that the difference is significant is 90%.

[4] Coefficient of Variation (CV) indicates the quality of a trial, and lower than 15 indicates a high quality trial. For CV>15, there was higher than expected variability in the field or the data and the results should be used with caution.

## EAST DRYLAND WHEAT VARIETY TESTS 2018 - 2020

Variety	Brand	Grain Yield (bu/a)	Bushel Weight (lb/bu)	Plant Height (inches)	Grain Protein (%)
<b>Two year averages</b>					
WB4699	WestBred	87.3	58.9	30.5	12.1
WB4303	WestBred	87.2	57.1	31.6	13.9
NE14434	UNL-Experimental	86.0	58.6	37.6	12.2
LCS Valiant	Limagrain Cereal Seeds	85.5	60.5	33.4	14.0
NHH144913-3	UNL-Experimental	85.2	55.7	35.0	13.5
Ruth	Husker Genetics	85.0	58.7	37.3	12.9
NW13493	UNL-Experimental	84.8	60.5	36.0	13.4
Zenda	Kansas Wheat Alliance	82.4	61.2	35.2	13.3
Siege	NuPride Genetics	81.5	61.4	35.3	13.8
WB4269	WestBred	81.4	59.4	31.8	12.5
Long Branch	Dyna-Gro Seed	80.8	57.3	34.8	13.0
Freeman	Husker Genetics	79.6	57.4	35.5	13.0
Turkey	Check	57.6	58.6	45.1	14.6
Scout 66	Check	57.3	59.0	43.7	14.5
<b>Average of all entries</b>		<b>80.1</b>	<b>58.9</b>	<b>35.9</b>	<b>13.3</b>
<b>Standard deviation</b>		<b>9.9</b>	<b>1.7</b>	<b>4.1</b>	<b>0.8</b>
<b>Three year averages</b>					
WB4303	WestBred	90.5	57.0	31.2	13.8
LCS Valiant	Limagrain Cereal Seeds	88.7	60.1	33.1	13.8
NW13493	UNL-Experimental	86.8	60.3	35.1	13.2
Ruth	Husker Genetics	86.7	58.4	36.1	12.9
NHH144913-3	UNL-Experimental	86.1	55.6	34.0	13.2
Zenda	Kansas Wheat Alliance	84.9	60.7	34.5	13.3
WB4269	WestBred	84.6	58.9	30.8	12.4
Long Branch	Dyna-Gro Seed	84.4	57.2	34.2	12.9
Siege	NuPride Genetics	84.2	61.1	34.5	13.6
Freeman	Husker Genetics	81.0	57.1	34.7	12.9
Turkey	Check	62.7	58.6	43.9	14.7
Scout 66	Check	62.6	59.0	42.8	14.4
<b>Average of all entries</b>		<b>81.9</b>	<b>58.7</b>	<b>35.4</b>	<b>13.4</b>
<b>Standard deviation</b>		<b>9.3</b>	<b>1.7</b>	<b>4.0</b>	<b>0.7</b>

# SOUTH CENTRAL DRYLAND WHEAT VARIETY TEST - 2020

## JEFFERSON, CLAY, AND HARLAN COUNTIES

Variety	Brand	Average Yield (bu/a)	Jefferson Yield (bu/a)	Clay Yield (bu/a)	Harlan Yield (bu/a)	Bushel Weight (lb/bu)	Plant Height (in)	Grain Protein (%)
WB-Grainfield	WestBred	85.8	83.6	83.8	90.2	60.3	32.4	12.8
LCS Link	Limagrain Cereal Seeds	84.6	88.5	87.7	77.7	61.2	32.0	13.3
NW15443	UNL-Experimental	82.9	91.2	80.6	76.9	59.1	33.9	13.1
NW13493	UNL-Experimental	82.1	86.2	84.0	76.1	60.1	31.3	13.4
NHH144913-3	UNL-Experimental	80.7	81.2	85.5	75.6	55.8	32.3	13.5
WB4699	WestBred	80.2	68.2	78.4	93.9	59.1	27.0	12.4
Wesley	Husker Genetics	78.6	77.4	86.7	71.7	59.6	31.5	13.8
LCS Chrome	Limagrain Cereal Seeds	77.6	74.7	80.8	77.4	59.2	33.8	14.1
WB4269	WestBred	77.5	80.9	75.1	76.6	60.0	27.6	13
CP7869	CROPLAN by Winfield United	77.0	84.4	73.5	73.0	60.4	29.6	12.9
SY Monument	AgriPro-Syngenta	76.9	72.9	82.4	75.5	59.0	30.6	12.6
Long Branch	Dyna-Gro Seed	76.2	85.3	78.0	65.3	58.2	30.0	13.1
WB4792	WestBred	75.1	80.0	81.4	64.0	58.5	30.5	12.8
CP7017AX	CROPLAN by Winfield United	74.9	76.0	86.9	61.7	59.0	28.0	12.7
LCS Valiant	Limagrain Cereal Seeds	74.3	79.7	77.7	65.6	60.0	29.3	14.4
AM Cartwright	AgriMaxx Wheat Company	74.2	76.2	72.3	74.1	59.2	30.5	14.1
NE14434	UNL-Experimental	73.7	78.1	75.7	67.4	57.7	32.6	13.4
KS Western Star	Kansas Wheat Alliance	73.6	79.1	79.3	62.3	59.5	30.4	12.9
WB4595	WestBred	73.1	74.4	83.7	61.2	61.2	30.1	12.9
Freeman	Husker Genetics	71.4	77.1	77.8	59.4	57.0	30.8	13.4
SY Benefit	AgriPro-Syngenta	71.3	68.1	77.5	68.3	60.5	31.6	13.3
NE15624	UNL-Experimental	71.2	73.2	80.1	60.4	58.8	29.1	13.8
Zenda	Kansas Wheat Alliance	71.1	73.5	67.8	72.1	59.8	30.8	13.8
Ruth	Husker Genetics	70.1	72.1	71.5	66.8	59.9	30.8	13.1
WB4303	WestBred	70.0	75.9	75.6	58.6	56.9	28.1	14.1
Siege	NuPride Genetics	69.6	77.1	71.5	60.2	60.7	31.5	13.9
NE16562	UNL-Experimental	68.1	68.1	77.2	59.0	57.8	30.8	13.6
SY Wolverine	AgriPro-Syngenta	68.0	70.2	82.0	51.8	59.4	27.1	14.1
CP7010	CROPLAN by Winfield United	67.9	77.6	75.4	50.6	58.8	29.4	13.4
CP7050AX	CROPLAN by Winfield United	64.3	70.4	67.8	54.7	59.2	29.1	14.6
CP7909	CROPLAN by Winfield United	62.7	70.2	78.1	40.0	59.2	27.4	13.5
Turkey	Check	61.3	70.3	58.6	55.1	57.9	40.4	14.6
Scout 66	Check	53.4	60.1	62.4	37.8	57.0	37.6	14.3
<b>Average of all entries</b>		<b>73.3</b>	<b>77.2</b>	<b>77.5</b>	<b>66.1</b>	<b>59.1</b>	<b>30.8</b>	<b>13.5</b>
<b>Standard deviation</b>		<b>6.9</b>	.	.	.	<b>1.3</b>	<b>2.8</b>	<b>0.6</b>
<b>LSD [1]</b>		.	<b>6.3</b>	<b>7.3</b>	<b>5.9</b>	.	.	.
<b>Coefficient of variation [2]</b>		.	<b>9.2</b>	<b>8.6</b>	<b>18.2</b>	.	.	.

[1] For differences between varieties that are equal to or greater than the LSD value, the chance that the difference is significant is 90%.

[2] Coefficient of Variation (CV) indicates the quality of a trial, and lower than 15 indicates a high quality trial. For CV>15, there was higher than expected variability in the field or the data and the results should be used with caution.



## SOUTH CENTRAL DRYLAND WHEAT VARIETY TESTS 2018 - 2020

Variety	Brand	Grain Yield (bu/a)	Bushel Weight (lb/bu)	Plant Height (inches)	Grain Protein (%)
<b>Two year averages</b>					
NW15443 <sup>a</sup>	UNL-Experimental	90.9	58.9	35.6	12.6
WB-Grainfield	WestBred	90.6	58.4	34.6	12.1
NHH144913-3	UNL-Experimental	89.7	55.4	34.9	12.9
LCS Link <sup>a</sup>	Limagrain Cereal Seeds	88.7	60.9	34.0	13.1
WB4699 <sup>c</sup>	WestBred	88.5	58.3	28.8	11.9
NW13493	UNL-Experimental	86.2	59.3	34.2	12.8
Long Branch	Dyna-Gro Seed	85.1	57.1	32.7	12.8
LCS Valiant	Limagrain Cereal Seeds	85.0	59.1	31.6	13.6
CP7869 <sup>a</sup>	CROPLAN by Winfield United	85.0	60.0	30.4	12.7
SY Monumenta	AgriPro-Syngenta	84.9	58.0	32.6	12.5
WB4269	WestBred	84.7	58.9	29.9	12.4
LCS Chromea	Limagrain Cereal Seeds	84.3	59.1	34.8	13.7
NE14434	UNL-Experimental	82.8	57.2	36.3	12.5
WB4792d	WestBred	82.3	58.4	32.6	12.6
Freeman	Husker Genetics	81.7	56.3	34.0	12.6
Ruth	Husker Genetics	81.0	58.2	34.7	12.5
WB4595 <sup>a</sup>	WestBred	80.8	60.3	31.7	12.5
Siege	NuPride Genetics	79.7	59.7	34.2	13.6
SY Benefitb	AgriPro-Syngenta	79.2	60.4	32.3	13.0
WB4303 <sup>a</sup>	WestBred	78.5	57.2	29.4	13.8
SY Wolverinea	AgriPro-Syngenta	78.4	57.7	29.1	13.5
NE15624 <sup>a</sup>	UNL-Experimental	77.6	58.7	32.1	13.4
Zendac	Kansas Wheat Alliance	77.1	59.7	32.8	13.1
CP7909 <sup>a</sup>	CROPLAN by Winfield United	73.0	59.1	29.6	12.7
Turkey	Check	63.5	58.1	42.0	14.1
Scout 66	Check	57.4	57.5	40.3	13.8
<b>Average of all entries</b>		<b>81.4</b>	<b>58.5</b>	<b>33.3</b>	<b>13.0</b>
<b>Standard deviation</b>		<b>7.7</b>	<b>1.3</b>	<b>3.1</b>	<b>0.6</b>

<sup>a</sup>Tested only in Harlan County in 2019

<sup>b</sup>Tested only in Jefferson County in 2019

<sup>c</sup>Tested in Jefferson and Clay Counties in 2019

<sup>d</sup>Tested in Clay and Harlan Counties in 2019

TABLE CONTINUED ON NEXT PAGE

# SOUTH CENTRAL DRYLAND WHEAT VARIETY TESTS 2018 - 2020

Variety	Brand	Grain Yield (bu/a)	Bushel Weight (lb/bu)	Plant Height (inches)	Grain Protein (%)
<b>Three year averages</b>					
WB-Grainfield	WestBred	82.4	58.0	33.1	12.4
NHH144913-3	UNL-Experimental	82.2	55.1	33.4	13.0
NW13493	UNL-Experimental	80.1	58.7	32.9	12.9
WB4269	WestBred	79.5	58.6	28.9	12.6
Long Branch	Dyna-Gro Seed	78.1	56.5	31.6	12.8
LCS Valiant	Limagrain Cereal Seeds	77.5	58.5	30.7	13.7
LCS Link	Limagrain Cereal Seeds	77.2	59.0	31.8	13.4
SY Monument	AgriPro-Syngenta	77.0	56.7	31.0	12.9
NE14434	UNL-Experimental	76.0	56.5	34.5	12.7
LCS Chrome	Limagrain Cereal Seeds	75.1	57.6	32.7	13.8
Freeman	Husker Genetics	73.4	55.8	32.6	12.8
Ruth	Husker Genetics	73.4	57.6	33.4	12.8
SY Benefit	AgriPro-Syngenta	72.2	59.0	31.2	13.2
Siege	NuPride Genetics	71.5	59.6	32.4	13.8
WB4303	WestBred	71.3	56.6	28.3	14.1
Zenda	Kansas Wheat Alliance	69.7	59.4	31.4	13.4
Turkey	Check	59.6	57.9	39.6	14.2
Scout 66	Check	53.7	57.3	38.6	13.9
<b>Average of all entries</b>		<b>73.9</b>	<b>57.7</b>	<b>32.7</b>	<b>13.2</b>
<b>Standard deviation</b>		<b>7.3</b>	<b>1.3</b>	<b>2.8</b>	<b>0.6</b>



# WEST CENTRAL DRYLAND WHEAT VARIETY TESTS - 2020

## RED WILLOW, LINCOLN, PERKINS, AND KEITH COUNTIES (1/2)

Variety	Brand	Average Yield (bu/a)	Red Willow Yield (bu/a)	Lincoln Yield (bu/a)	Perkins Yield (bu/a)	Keith Yield (bu/a)	Bushel Weight (lb/bu)	Plant Height (inches)	Grain Protein (%)
LCS Link	Limagrain Cereal Seeds	55.2	76.0	47.5	45.7	51.5	53.7	31.1	11.4
CP7010	CROPLAN by Winfield United	53.4	92.4	42.3	44.3	34.7	56.2	29.6	11.6
WB4462	WestBred	53.2	86.7	42.6	43.7	39.9	55.0	31.8	12.2
WB4595	WestBred	53.1	97.7	49.3	37.8	27.8	54.9	30.6	11.0
WB4792	WestBred	52.0	83.4	39.5	39.7	45.5	53.2	29.4	11.5
NW15443	UNL-Experimental	51.7	86.7	48.3	42.8	28.8	55.3	32.8	11.5
SY Rugged	AgriPro-Syngenta	51.3	86.4	50.4	41.5	26.9	53.3	30.0	10.9
Settler CL	NuPride Genetics	50.8	83.9	45.4	41.2	32.7	56.2	29.8	11.3
LCS Valiant	Limagrain Cereal Seeds	50.8	83.7	44.2	39.3	35.8	54.9	29.9	11.3
NW13493	UNL-Experimental	50.7	93.0	39.5	40.3	29.9	54.5	29.1	11.8
Canvas	PlainsGold	50.4	84.7	42.7	45.2	29.1	55.8	29.1	10.9
NHH144913-3	UNL-Experimental	50.4	79.7	47.1	39.1	35.7	52.6	31.0	12.3
CP7869	CROPLAN by Winfield United	50.0	77.5	50.1	38.4	34.2	56.4	29.2	11.2
WB4418	WestBred	49.4	85.9	43.0	39.8	29.0	55.8	29.4	11.8
Wesley	Husker Genetics	49.2	73.3	45.3	45.5	32.6	55.4	29.3	12.0
KS Dallas	Kansas Wheat Alliance	49.2	83.0	42.8	41.9	29.0	53.8	29.8	11.6
WB-Grainfield	WestBred	48.9	79.4	37.4	44.7	34.1	54.9	31.1	11.4
Tatanka	Kansas Wheat Alliance	48.2	72.6	43.3	45.1	31.9	54.8	29.8	10.4
SY Sunrise	AgriPro-Syngenta	48.1	86.6	42.3	37.0	26.4	55.6	28.1	11.4
LCS Chrome	Limagrain Cereal Seeds	48.0	81.1	46.6	40.7	23.6	55.9	30.3	12.3
AP 18AX	AgriPro-Syngenta	47.9	78.1	42.6	38.3	32.7	55.5	30.1	11.6
CP7017AX	CROPLAN by Winfield United	47.6	81.6	36.0	37.7	35.1	54.5	27.8	11.5
KS Western Star	Kansas Wheat Alliance	47.6	81.2	36.7	42.7	29.6	55.9	29.0	11.6
Ruth	Husker Genetics	47.1	70.5	43.3	38.9	36.0	54.8	30.4	11.5
NE14434	UNL-Experimental	46.9	71.6	41.8	39.7	34.4	51.9	31.3	11.9
SY Legend CL2	AgriPro-Syngenta	46.8	76.4	43.9	35.4	31.5	55.3	28.4	12.5
SY Monument	AgriPro-Syngenta	46.7	67.4	47.5	44.7	27.2	51.2	31.3	11.6
Freeman	Husker Genetics	46.4	67.5	42.7	42.8	32.5	53.1	29.6	11.9
Robidoux	Husker Genetics	46.3	69.4	42.0	44.4	29.5	54.8	31.8	11.9
CP7050AX	CROPLAN by Winfield United	45.7	67.2	43.4	40.6	31.8	55.3	29.8	12.1
Long Branch	Dyna-Gro Seeds	45.2	74.2	36.4	40.6	29.4	53.9	29.4	11.9
SY Wolverine	AgriPro-Syngenta	45.1	71.1	43.1	39.8	26.5	56.9	29.1	11.8
NE15624	UNL-Experimental	44.7	68.8	41.5	39.5	29.1	54.9	29.0	12.3
NE15410	UNL-Experimental	44.5	73.3	36.2	36.0	32.6	53.8	30.9	12.0
NE14691	UNL-Experimental	43.9	70.8	35.5	38.5	30.7	52.3	30.6	11.9
SY 517 CL2	AgriPro-Syngenta	43.2	61.2	38.6	38.5	34.4	53.1	28.4	11.9

TABLE CONTINUED ON NEXT PAGE

# WEST CENTRAL DRYLAND WHEAT VARIETY TESTS - 2020

## RED WILLOW, LINCOLN, PERKINS, AND KEITH COUNTIES (2/2)

Variety	Brand	Average Yield (bu/a)	Red Willow Yield (bu/a)	Lincoln Yield (bu/a)	Perkins Yield (bu/a)	Keith Yield (bu/a)	Bushel Weight (lb/bu)	Plant Height (inches)	Grain Protein (%)
CP7909	CROPLAN by Winfield United	43.1	64.1	42.8	36.0	29.8	54.8	29.1	11.4
Siege	NuPride Genetics	41.7	64.7	36.5	32.4	33.0	56.1	29.6	12.5
Scout 66	Check	39.2	63.0	32.5	32.4	28.8	54.1	35.4	11.9
NE16562	UNL-Experimental	38.7	57.4	35.1	37.9	24.4	51.7	29.6	12.8
Crescent AX	PlainsGold	36.8	.	39.6	44.2	26.6	54.6	31.1	11.6
Turkey	Check	36.8	60.1	31.4	28.6	26.9	54.6	35.8	13.2
Goodstreak	Husker Genetics	33.5	.	35.0	33.4	32.1	52.5	35.5	12.8
<b>Average of all entries</b>		<b>47.0</b>	<b>76.4</b>	<b>41.7</b>	<b>39.9</b>	<b>31.7</b>	<b>54.5</b>	<b>30.3</b>	<b>11.8</b>
<b>Standard deviation</b>		<b>4.8</b>	.	.	.	.	<b>1.4</b>	<b>1.8</b>	<b>0.5</b>
<b>LSD [1]</b>		.	<b>12.8</b>	<b>5.1</b>	<b>7.6</b>	<b>11.7</b>	.	.	.
<b>Coefficient of variation [2]</b>		.	<b>12.4</b>	<b>11.1</b>	<b>9.7</b>	<b>15.9</b>	.	.	.

[1] For differences between varieties that are equal to or greater than the LSD value, the chance that the difference is significant is 90%.

[2] Coefficient of Variation (CV) indicates the quality of a trial, and lower than 15 indicates a high quality trial. For CV>15, there was higher than expected variability in the field or the data and the results should be used with caution.



# WEST CENTRAL DRYLAND WHEAT VARIETY TESTS 2018 - 2020

Variety	Brand	Grain Yield (bu/a)	Bushel Weight (lb/bu)	Plant Height (inches)	Grain Protein (%)
<b>Two year averages</b>					
WB4595	WestBred	73.2	57.5	31.7	11.7
SY Monument	AgriPro-Syngenta	72.4	54.6	32.2	12.2
WB4792	WestBred	72.0	55.9	32.0	11.8
NW15443	UNL-Experimental	71.7	56.5	34.9	11.9
CP7869	CROPLAN by Winfield United	71.3	58.2	30.0	11.8
NHH144913-3	UNL-Experimental	69.8	54.5	31.4	12.3
AP 18AX	AgriPro-Syngenta	69.7	56.9	31.1	11.8
LCS Valiant	Limagrain Cereal Seeds	69.5	57.1	31.0	12.2
LCS Link	Limagrain Cereal Seeds	69.4	56.7	32.9	12.0
WB4462	WestBred	69.4	57.1	33.1	12.5
Settler CL	NuPride Genetics	68.9	58.0	31.4	11.7
Tatanka	Kansas Wheat Alliance	68.7	57.1	30.0	11.3
WB-Grainfield	WestBred	68.4	56.7	32.2	11.9
SY Rugged	AgriPro-Syngenta	68.2	56.1	29.4	11.9
NE14434	UNL-Experimental	68.0	54.9	33.5	12.0
Robidoux	Husker Genetics	67.7	56.8	32.0	12.1
SY Legend CL2	AgriPro-Syngenta	66.7	57.0	30.0	12.8
Freeman	Husker Genetics	66.6	55.6	31.3	11.9
NW13493	UNL-Experimental	66.5	56.7	31.2	12.4
Canvas	PlainsGold	66.4	57.8	30.1	11.5
WB4418	WestBred	66.2	57.0	30.6	12.5
SY Sunrise	AgriPro-Syngenta	66.1	57.7	29.5	12.2
SY Wolverine	AgriPro-Syngenta	65.9	58.3	29.4	12.4
Long Branch	Dyna-Gro Seeds	65.4	56.4	31.1	12.3
LCS Chrome	Limagrain Cereal Seeds	65.2	57.6	31.9	12.8
Ruth	Husker Genetics	65.0	57.0	32.6	12.0
CP7909	CROPLAN by Winfield United	64.5	56.8	28.7	11.9
NE15624	UNL-Experimental	63.5	57.0	29.7	12.6
Siege	NuPride Genetics	63.3	58.2	31.8	12.8
NE14691	UNL-Experimental	62.7	55.4	32.9	12.6
Crescent AX	PlainsGold	61.8	57.6	31.2	12.1
Turkey	Check	54.7	56.7	36.6	13.6
Scout 66	Check	54.1	56.5	36.5	12.7
<b>Average of all entries</b>		<b>66.7</b>	<b>56.8</b>	<b>31.6</b>	<b>12.2</b>
<b>Standard deviation</b>		<b>4.3</b>	<b>1.0</b>	<b>1.8</b>	<b>0.5</b>

TABLE CONTINUED ON NEXT PAGE

# WEST CENTRAL DRYLAND WHEAT VARIETY TESTS 2018 - 2020

Variety	Brand	Grain Yield (bu/a)	Bushel Weight (lb/bu)	Plant Height (inches)	Grain Protein (%)
<b>Three year averages</b>					
SY Monument	AgriPro-Syngenta	72.4	55.2	32.0	12.3
CP7869	CROPLAN by Winfield United	71.1	58.4	29.7	11.9
LCS Valiant	Limagrain Cereal Seeds	70.3	57.5	30.5	12.4
NHH144913-3	UNL-Experimental	70.2	54.8	31.0	12.4
Settler CL	NuPride Genetics	69.3	58.2	31.0	11.8
Tatanka	Kansas Wheat Alliance	69.2	57.6	29.5	11.4
WB-Grainfield	WestBred	69.0	57.0	31.9	12.0
LCS Link	Limagrain Cereal Seeds	68.9	57.1	32.3	12.2
SY Rugged	AgriPro-Syngenta	68.6	56.7	28.9	11.9
NE14434	UNL-Experimental	67.9	55.3	32.9	12.1
Robidoux	Husker Genetics	67.6	57.0	31.7	12.3
NW13493	UNL-Experimental	67.0	57.2	30.8	12.5
SY Legend CL2	AgriPro-Syngenta	67.0	57.4	29.7	12.9
SY Sunrise	AgriPro-Syngenta	66.8	58.1	29.1	12.3
WB4418	WestBred	66.6	57.6	30.0	12.6
Freeman	Husker Genetics	66.0	55.6	30.8	12.0
Long Branch	Dyna-Gro Seeds	65.8	56.8	30.9	12.4
Ruth	Husker Genetics	65.8	57.3	32.2	12.1
LCS Chrome	Limagrain Cereal Seeds	65.2	57.9	31.4	12.9
Siege	NuPride Genetics	63.9	58.5	31.3	12.9
Turkey	Check	55.1	56.9	36.5	13.7
Scout 66	Check	54.4	56.6	36.4	12.7
<b>Average of all entries</b>		<b>66.7</b>	<b>57.0</b>	<b>31.4</b>	<b>12.4</b>
<b>Standard deviation</b>		<b>4.4</b>	<b>1.0</b>	<b>2.0</b>	<b>0.5</b>



# PANHANDLE (WEST) DRYLAND WHEAT VARIETY TESTS - 2020

## DEUEL, CHEYENNE, CHEYENNE(IM), BOX BUTTE, AND BANNER COUNTIES (1/2)

Variety	Brand	Average Deuel		Cheyenne		Cheyenne IM Yield (bu/a)	Box Butte Yield (bu/a)	Banner Yield (bu/a)	Bushel Weight (lb/bu)	Plant Height (in)	Grain Protein (%)
		Yield (bu/a)	Yield (bu/a)	Yield (bu/a)	Yield (bu/a)						
Spur	AgriPro-Syngenta	48.8	42.7	38.6	44.2	56.2	62.4	52.5	27.3	14.0	
WB4595	WestBred	46.8	39.9	33.3	41.8	56.3	62.7	57.5	27.7	12.9	
Whistler	PlainsGold	46.7	41.7	33.9	45.6	52.1	60.1	53.0	28.3	14.1	
WB4462	WestBred	46.6	36.1	29.6	41.8	62.1	63.3	55.5	29.9	13.9	
CP7869	CROPLAN by Winfield United	45.1	39.4	31.5	40.4	52.5	61.6	55.1	26.5	13.6	
Wesley	Husker Genetics	44.6	35.7	32.9	39.4	54.1	60.9	54.3	26.5	14.5	
NHH144913-3	UNL-Experimental	44.6	40.2	26.0	38.8	54.8	63.0	52.4	28.1	14.3	
Canvas	PlainsGold	44.5	35.7	32.4	41.5	54.5	58.6	55.9	26.2	13.4	
CP7017AX	CROPLAN by Winfield United	44.5	42.6	28.9	38.4	52.9	59.6	55.2	26.7	13.3	
LCS Link	Limagrain Cereal Seeds	44.3	39.6	27.1	40.5	54.8	59.3	55.0	27.7	13.9	
NE15420	UNL-Experimental	43.8	32.0	32.0	40.9	51.2	63.1	55.1	26.1	14.2	
Breck	PlainsGold	43.8	35.5	29.1	40.6	53.5	60.2	56.7	27.4	13.7	
SY Legend CL2	AgriPro-Syngenta	43.7	39.7	25.3	36.4	55.6	61.4	54.8	28.0	14.6	
WB4418	WestBred	43.6	39.7	27.8	39.5	51.4	59.6	54.8	27.0	13.9	
Settler CL	NuPride Genetics	43.5	36.1	30.3	38.6	52.0	60.4	55.5	27.7	14.0	
SY Monument	AgriPro-Syngenta	43.3	40.7	26.1	35.8	55.4	58.6	54.4	26.8	13.6	
AP 18AX	AgriPro-Syngenta	43.3	39.0	24.5	36.2	55.0	61.8	55.2	27.3	13.1	
Langin	PlainsGold	43.3	37.3	27.0	37.4	51.8	62.8	55.2	26.2	13.3	
Fortify SF	PlainsGold	42.9	33.0	35.1	41.2	50.9	54.5	56.0	27.4	13.5	
WB-Grainfield	WestBred	42.5	35.7	27.7	38.4	51.8	59.1	55.1	28.8	13.8	
LCS Valiant	Limagrain Cereal Seeds	42.4	30.5	25.4	35.9	61.6	58.7	54.8	27.2	14.2	
CP7010	CROPLAN by Winfield United	42.2	34.9	30.1	39.6	47.4	58.9	57.3	26.3	13.6	
Panhandle	Husker Genetics	42.0	36.0	23.1	37.1	50.1	63.5	54.5	30.3	15.2	
NW15443	UNL-Experimental	41.9	38.0	30.3	36.2	48.8	56.4	54.4	28.6	14.1	
WB4792	WestBred	41.9	32.4	34.7	42.6	47.6	52.2	54.9	26.3	13.7	
CP7050AX	CROPLAN by Winfield United	41.9	36.5	26.7	32.7	54.4	59.1	57.3	27.0	14.5	
Crescent AX	PlainsGold	41.1	36.5	22.9	35.9	55.1	55.0	56.2	27.5	13.0	
Ruth	Husker Genetics	40.6	35.1	28.3	35.6	45.6	58.5	55.0	27.6	14.6	
NE14696	UNL-Experimental	40.4	30.1	31.8	35.0	51.7	53.4	55.2	29.1	14.4	
SY Wolverine	AgriPro-Syngenta	40.3	32.8	24.1	33.1	53.8	57.6	56.0	26.4	14.5	
CP7909	CROPLAN by Winfield United	40.0	34.1	25.5	30.9	54.0	55.4	56.2	25.9	13.0	
Long Branch	Dyna-Gro Seeds	40.0	35.9	18.9	26.9	58.5	59.7	54.5	26.5	13.5	
Guardian	PlainsGold	39.9	38.4	22.0	33.5	48.5	57.2	55.7	27.4	14.6	
NE14691	UNL-Experimental	39.9	33.5	24.4	34.4	55.2	51.9	52.6	28.4	14.6	

TABLE CONTINUED ON NEXT PAGE

# PANHANDLE (WEST) DRYLAND WHEAT VARIETY TESTS - 2020

## DEUEL, CHEYENNE, CHEYENNE(IM), BOX BUTTE, AND BANNER COUNTIES (2/2)

Variety	Brand	Average Deuel		Cheyenne		Cheyenne IM Yield (bu/a)	Box Butte Yield (bu/a)	Banner Yield (bu/a)	Bushel Weight (lb/bu)	Plant Height (in)	Grain Protein (%)
		Yield (bu/a)	Yield (bu/a)	Yield (bu/a)	Yield (bu/a)						
NE15624	UNL-Experimental	39.5	32.1	25.3	31.0	55.0	54.2	55.3	26.0	14.7	
SY 517 CL2	AgriPro-Syngenta	39.5	32.1	27.7	32.9	53.1	51.8	56.1	26.3	14.5	
SY Rugged	AgriPro-Syngenta	39.4	39.9	24.4	28.6	45.8	58.6	55.4	26.4	13.2	
Siege	NuPride Genetics	39.3	33.0	25.7	31.8	49.8	56.2	55.1	26.6	14.8	
Robidoux	Husker Genetics	39.3	31.4	28.9	32.3	51.3	52.4	53.4	27.6	14.6	
Freeman	Husker Genetics	38.3	29.6	24.3	35.8	52.2	49.7	53.3	26.5	14.3	
NW13493	UNL-Experimental	38.2	26.8	30.2	37.4	44.3	52.1	54.5	27.0	14.3	
NE16562	UNL-Experimental	37.8	29.9	26.6	32.9	45.7	53.9	52.8	26.2	14.6	
Goodstreak	Husker Genetics	37.3	25.8	26.2	37.1	49.7	47.7	55.4	30.6	14.9	
NE15410	UNL-Experimental	35.8	22.8	26.2	33.9	47.3	48.6	53.9	27.5	14.7	
Pronghorn	Husker Genetics	35.0	26.8	24.2	33.1	48.1	43.1	56.6	31.7	14.5	
NE14434	UNL-Experimental	34.9	20.5	32.5	34.5	43.8	43.1	53.3	27.3	14.4	
Scout 66	Check	31.7	25.7	19.9	27.6	45.5	40.1	55.2	31.4	14.0	
Turkey	Check	31.1	22.2	23.0	30.3	42.6	37.4	54.6	30.5	15.4	
<b>Average of all entries</b>		<b>41.3</b>	<b>34.3</b>	<b>27.8</b>	<b>36.4</b>	<b>51.8</b>	<b>56.2</b>	<b>55.0</b>	<b>27.6</b>	<b>14.1</b>	
<b>Standard deviation</b>		<b>3.6</b>	.	.	.	.	.	<b>1.2</b>	<b>1.4</b>	<b>0.6</b>	
<b>LSD [1]</b>		.	<b>5.9</b>	<b>6.2</b>	<b>5.2</b>	<b>4.8</b>	<b>4.4</b>	.	.	.	
<b>Coefficient of variation [2]</b>		.	<b>15.6</b>	<b>14.6</b>	<b>11.6</b>	<b>8.2</b>	<b>10.9</b>	.	.	.	

[1] For differences between varieties that are equal to or greater than the LSD value, the chance that the difference is significant is 90%.

[2] Coefficient of Variation (CV) indicates the quality of a trial, and lower than 15 indicates a high quality trial. For CV>15, there was higher than expected variability in the field or the data and the results should be used with caution.





# PANHANDLE DRYLAND WHEAT VARIETY TESTS 2018 - 2020 (1/2)

Variety	Brand	Grain Yield (bu/a)	Bushel Weight (lb/bu)	Plant Height (inches)	Grain Protein (%)
Two year averages					
Spur	AgriPro-Syngenta	60.4	53.9	30.2	13.2
AP 18AX	AgriPro-Syngenta	58.2	56.0	31.3	12.6
Whistler	PlainsGold	57.9	54.7	31.9	13.0
WB4462	WestBred	57.4	56.6	33.3	13.1
Langin	PlainsGold	57.2	55.3	29.1	12.6
Canvas	PlainsGold	57.0	56.5	29.5	12.7
WB4418	WestBred	56.6	55.7	30.0	12.9
WB4595	WestBred	56.4	58.4	31.3	12.2
Robidoux	Husker Genetics	56.2	54.9	32.2	13.6
NHH144913-3	UNL-Experimental	56.0	53.3	30.9	13.6
CP7869	CROPLAN by Winfield United	55.6	56.4	28.4	12.7
Ruth	Husker Genetics	55.6	56.4	31.4	13.7
SY Monument	AgriPro-Syngenta	55.4	55.2	30.6	12.5
WB-Grainfield	WestBred	54.8	56.2	31.7	12.8
Crescent AX	PlainsGold	54.7	57.0	32.0	12.5
Settler CL	NuPride Genetics	54.3	56.7	31.2	13.1
Breck	PlainsGold	54.1	57.9	31.7	12.9
LCS Link	Limagrain Cereal Seeds	53.9	56.5	31.2	13.1
CP7909	CROPLAN by Winfield United	53.8	56.9	29.2	12.3
Freeman	Husker Genetics	53.8	54.6	29.5	13.0
NE15624	UNL-Experimental	53.7	56.2	28.6	13.8
SY Legend CL2	AgriPro-Syngenta	53.7	56.1	30.1	13.5
Panhandle	Husker Genetics	53.6	55.6	34.8	14.0
Long Branch	Dyna-Gro Seeds	53.5	55.4	30.7	13.0
WB4792	WestBred	53.3	56.6	31.0	12.7
NE14696	UNL-Experimental	53.1	56.0	33.4	13.3
LCS Valiant	Limagrain Cereal Seeds	52.9	56.2	31.8	13.3
Siege	NuPride Genetics	52.1	56.8	30.8	13.9
SY Wolverine	AgriPro-Syngenta	50.3	56.8	29.2	13.6
NW13493	UNL-Experimental	50.2	56.2	30.9	13.2
SY Rugged	AgriPro-Syngenta	49.9	56.1	29.2	12.6
Pronghorn	Husker Genetics	49.8	57.6	35.4	13.6
NE14434	UNL-Experimental	49.6	54.7	32.1	13.3
NE14691	UNL-Experimental	48.8	55.2	31.2	13.4
Goodstreak	Husker Genetics	48.8	56.7	35.8	14.0
Scout 66	Check	41.6	56.2	35.2	13.3
Turkey	Check	41.3	55.9	36.1	14.7
<b>Average of all entries</b>		<b>53.4</b>	<b>56.0</b>	<b>31.4</b>	<b>13.2</b>
<b>Standard deviation</b>		<b>4.0</b>	<b>1.0</b>	<b>2.0</b>	<b>0.5</b>

TABLE CONTINUED ON NEXT PAGE

## PANHANDLE DRYLAND WHEAT VARIETY TESTS 2018 - 2020 (2/2)

Variety	Brand	Grain Yield (bu/a)	Bushel Weight (lb/bu)	Plant Height (inches)	Grain Protein (%)
<b>Three year averages</b>					
Whistler	PlainsGold	58.7	54.7	32.1	12.6
Langin	PlainsGold	58.2	55.3	29.3	12.2
WB4462	WestBred	58.1	56.6	33.4	12.8
WB4418	WestBred	57.3	55.7	30.1	12.6
Robidoux	Husker Genetics	57.3	54.9	32.4	13.2
Ruth	Husker Genetics	57.1	56.4	31.6	13.3
CP7869	CROPLAN by Winfield United	56.7	56.4	28.7	12.5
WB-Grainfield	WestBred	56.5	56.2	31.6	12.5
NHH144913-3	UNL-Experimental	56.1	53.3	30.9	13.2
Freeman	Husker Genetics	56.0	54.6	29.9	12.7
SY Monument	AgriPro-Syngenta	55.7	55.2	30.7	12.2
Breck	PlainsGold	55.7	57.9	31.8	12.6
Long Branch	Dyna-Gro Seeds	55.2	55.4	30.8	12.6
LCS Link	Limagrain Cereal Seeds	55.1	56.5	31.3	12.8
Panhandle	Husker Genetics	54.6	55.6	35.1	13.7
SY Legend CL2	AgriPro-Syngenta	54.5	56.1	30.0	13.3
LCS Valiant	Limagrain Cereal Seeds	54.3	56.2	31.8	13.1
Settler CL	NuPride Genetics	53.5	56.7	31.2	12.9
Siege	NuPride Genetics	52.9	56.8	30.9	13.6
NE14434	UNL-Experimental	51.7	54.7	32.3	12.9
NW13493	UNL-Experimental	51.6	56.2	31.1	12.9
Pronghorn	Husker Genetics	50.9	57.6	36.0	13.4
SY Rugged	AgriPro-Syngenta	50.5	56.1	29.2	12.3
Goodstreak	Husker Genetics	49.6	56.7	36.2	13.7
Scout 66	Check	42.2	56.2	35.9	13.1
Turkey	Check	41.4	55.9	36.5	14.3
<b>Average of all entries</b>		<b>53.9</b>	<b>55.9</b>	<b>32.0</b>	<b>13.0</b>
<b>Standard deviation</b>		<b>4.3</b>	<b>1.0</b>	<b>2.2</b>	<b>0.5</b>

# WEST IRRIGATED WHEAT VARIETY TEST - 2020

## BOX BUTTE AND CHASE COUNTIES

Variety	Brand	Average Yield (bu/ac)	Box Butte Yield (bu/a)	Chase Yield (bu/a)	Bushel Weight (lb/bu)
Canvas	PlainsGold	106.8	119.9	93.8	61.0
WB4595	WestBred	104.1	116.5	91.8	61.3
LCS Valiant	Limagrain Cereal Seeds	103.0	116.6	89.4	60.7
Monarch	PlainsGold	102.9	116.5	89.3	59.9
Long Branch	Dyna-Gro Seed	102.4	120.5	84.2	59.5
WB4303	WestBred	101.7	119.7	83.8	57.2
CP7017AX	CROPLAN by Winfield United	101.7	114.6	88.9	60.1
WB4418	WestBred	101.2	116.6	85.8	58.8
CP7869	CROPLAN by Winfield United	101.2	110.8	91.5	58.7
Wesley	Husker Genetics	99.0	113.3	84.5	59.0
WB-Grainfield	WestBred	98.4	115.9	80.9	59.0
CP7909	CROPLAN by Winfield United	98.2	115.2	81.2	59.1
WB4699	WestBred	98.2	108.0	88.3	57.9
SY Sunrise	AgriPro-Syngenta	96.9	106.2	87.6	59.3
CP7050AX	CROPLAN by Winfield United	96.8	116.3	77.3	60.5
NHH144913-3	UNL-Experimental	96.8	109.7	83.8	57.2
SY Wolverine	AgriPro-Syngenta	96.5	112.7	80.3	59.4
CP7010	CROPLAN by Winfield United	96.5	104.1	88.8	59.9
NE15420	UNL-Experimental	95.1	103.4	86.7	59.1
NE15624	UNL-Experimental	93.9	105.9	81.9	59.3
Breck	PlainsGold	93.7	103.6	83.7	61.0
AM Cartwright	AgriMaxx Wheat Company	91.5	101.6	81.3	59.2
AM Eastwood	AgriMaxx Wheat Company	90.4	97.9	82.8	58.9
WB4792	WestBred	89.3	95.6	83.0	60.0
LCS Link	Limagrain Cereal Seeds	88.4	96.7	80.1	59.7
Robidoux	Husker Genetics	84.6	88.7	80.4	58.4
NE14434	UNL-Experimental	83.7	95.8	71.6	58.6
Siege	NuPride Genetics	83.1	96.0	70.1	58.8
Turkey	Check	70.1	87.2	53.0	56.9
Scout 66	Check	62.4	66.2	58.6	57.9
<b>Average of all entries</b>		<b>94.3</b>	<b>106.8</b>	<b>81.8</b>	<b>59.2</b>
<b>Standard deviation</b>		<b>9.8</b>	.	.	<b>1.1</b>
<b>LSD [1]</b>		.	<b>16.5</b>	<b>9.0</b>	.
<b>Coefficient of variation [2]</b>		.	<b>10.8</b>	<b>10.5</b>	.

[1] For differences between varieties that are equal to or greater than the LSD value, the chance that the difference is significant is 90%.

[2] Coefficient of Variation (CV) indicates the quality of a trial, and lower than 15 indicates a high quality trial. For CV>15, there was higher than expected variability in the field or the data and the results should be used with caution.

## IRRIGATED WHEAT VARIETY TESTS 2018 - 2020

Variety	Brand	Grain Yield (bu/a)	Bushel Weight (lb/bu)	Plant Height (inches)	Grain Protein (%)
<b>Two year averages</b>					
WB4595	WestBred	105.0	59.6	30.9	12.5
WB4418	WestBred	104.6	57.3	30.5	13.2
WB4699	WestBred	103.3	56.6	27.1	12.8
NE15420	UNL-Experimental	103.2	58.0	29.5	13.4
WB4303	WestBred	102.7	56.4	30.3	13.8
Monarch	PlainsGold	102.2	58.1	30.9	12.1
Canvas	PlainsGold	101.5	58.9	30.6	12.4
WB-Grainfield	WestBred	100.9	57.7	29.4	13.1
NHH144913-3	UNL-Experimental	100.8	55.8	32.5	13.1
LCS Valiant	Limagrain Cereal Seeds	100.7	59.2	27.4	13.6
Long Branch	Dyna-Gro Seed	100.5	58.0	30.4	12.5
Wesley	Husker Genetics	98.8	57.3	30.1	13.8
CP7909	CROPLAN by Winfield United	97.8	58.3	28.6	12.3
AM Eastwood	AgriMaxx Wheat Company	97.3	57.6	29.3	13.7
CP7869	CROPLAN by Winfield United	96.2	57.4	27.4	13.1
SY Sunrise	AgriPro-Syngenta	95.3	58.4	29.4	13.2
WB4792	WestBred	92.3	58.4	30.4	13.0
SY Wolverine	AgriPro-Syngenta	88.5	57.3	29.5	12.5
Siege	NuPride Genetics	86.7	57.6	29.8	13.9
NE14434	UNL-Experimental	84.5	57.2	26.3	13.6
Robidoux	Husker Genetics	81.4	53.1	27.4	14.4
<b>Average of all entries</b>		<b>97.3</b>	<b>57.5</b>	<b>29.4</b>	<b>13.2</b>
<b>Standard deviation</b>		<b>6.9</b>	<b>1.4</b>	<b>1.5</b>	<b>0.6</b>

TABLE CONTINUED ON NEXT PAGE



## IRRIGATED WHEAT VARIETY TESTS 2018 - 2020 (continued)

Variety	Brand	Grain Yield (bu/a)	Bushel Weight (lb/bu)	Plant Height (inches)	Grain Protein (%)
<b>Three year averages</b>					
WB4418	WestBred	103.4	56.7	30.5	13.2
NE15420	UNL-Experimental	101.5	57.0	29.5	13.4
WB4303	WestBred	101.3	55.6	30.3	13.8
NHH144913-3	UNL-Experimental	100.3	55.7	32.5	13.1
WB-Grainfield	WestBred	99.3	56.8	29.4	13.1
Long Branch	Dyna-Gro Seed	98.0	57.2	30.4	12.5
AM Eastwood	AgriMaxx Wheat Company	97.8	57.2	29.3	13.7
CP7869	CROPLAN by Winfield United	97.5	56.9	27.4	13.1
Wesley	Husker Genetics	94.2	56.4	30.1	13.8
SY Sunrise	AgriPro-Syngenta	93.5	57.9	29.4	13.2
Siege	NuPride Genetics	89.1	57.1	29.8	13.9
Robidoux	Husker Genetics	86.3	53.6	27.4	14.4
<b>Average of all entries</b>		<b>96.9</b>	<b>56.5</b>	<b>29.6</b>	<b>13.4</b>
<b>Standard deviation</b>		<b>5.2</b>	<b>1.1</b>	<b>1.4</b>	<b>0.5</b>



## 2020 WHEAT GRAIN YIELD\* AT ALL LOCATIONS TESTED (1/2)

Variety	Brand	Washington				Jefferson			Red Willow				Deuel					Box Butte IRR	
		Saunders	SaundersIM	Lancaster		Clay	Harlan		Lincoln	Perkins	Keith		Cheyenne	CheyenneIM	Box Butte RF	Banner	Box Butte IRR	Chase IRR	
AM Cartwright	AgriMaxx Wheat Co	68	66	74	86	76	72	74	.	.	.	.	.	.	.	.	102	81	
AM Eastwood	AgriMaxx Wheat Co	.	.	.	.	.	.	.	.	.	.	.	.	.	.	.	98	83	
AP 18AX	AgriPro Syngenta	.	.	.	.	.	.	.	78	43	38	33	39	25	36	55	62	.	.
Breck	PlainsGold	.	.	.	.	.	.	.	.	.	.	.	36	29	41	54	60	104	84
Canvas	PlainsGold	.	.	.	.	.	.	.	85	43	45	29	36	32	42	55	59	120	94
CP7010	CROPLAN by Winfield	68	66	71	87	78	75	51	92	42	44	35	35	30	40	47	59	104	89
CP7017AX	CROPLAN by Winfield	81	79	77	83	76	87	62	82	36	38	35	43	29	38	53	60	115	89
CP7050AX	CROPLAN by Winfield	67	66	65	79	70	68	55	67	43	41	32	37	27	33	54	59	116	77
CP7869	CROPLAN by Winfield	85	74	75	87	84	74	73	78	50	38	34	39	32	40	53	62	111	92
CP7909	CROPLAN by Winfield	76	72	69	78	70	78	40	64	43	36	30	34	26	31	54	55	115	81
Crescent AX	PlainsGold	.	.	.	.	.	.	.	.	40	44	27	37	23	36	55	55	.	.
Fortify SF	PlainsGold	.	.	.	.	.	.	.	.	.	.	.	33	35	41	51	55	105	.
Freeman	Husker Genetics	77	71	68	78	77	78	59	68	43	43	33	30	24	36	52	50	.	.
Goodstreak	Husker Genetics	.	.	.	.	.	.	.	.	35	33	32	26	26	37	50	48	.	.
Guardian	PlainsGold	.	.	.	.	.	.	.	.	.	.	.	38	22	34	49	57	.	.
KS Dallas	Kansas Wheat Alliance	.	.	.	.	.	.	.	83	43	42	29	.	.	.	.	.	.	.
KS Western Star	Kansas Wheat Alliance	.	.	.	.	79	79	62	81	37	43	30	.	.	.	.	.	.	.
Langin	PlainsGold	.	.	.	.	.	.	.	.	.	.	.	37	27	37	52	63	.	.
LCS Chrome	Limagrain Cereal Seeds	.	.	.	.	75	81	77	81	47	41	24	.	.	.	.	.	.	.
LCS Link	Limagrain Cereal Seeds	.	.	.	.	89	88	78	76	48	46	52	40	27	41	55	59	97	80
LCS Valiant	Limagrain Cereal Seeds	74	67	71	83	80	78	66	84	44	39	36	31	25	36	62	59	117	89
Long Branch	Dyna-Gro Seed	86	73	72	83	85	78	65	74	36	41	29	36	19	27	59	60	120	84
Monarch	PlainsGold	.	.	.	.	.	.	.	.	.	.	.	.	.	.	.	.	117	89
NE14434	UNL-Experimental	81	67	66	91	78	76	67	72	42	40	34	21	33	35	44	43	96	72
NE14691	UNL-Experimental	.	.	.	.	.	.	.	71	36	39	31	34	24	34	55	52	.	.
NE14696	UNL-Experimental	.	.	.	.	.	.	.	.	.	.	.	30	32	35	52	53	.	.
NE15410	UNL-Experimental	.	.	.	.	.	.	.	73	36	36	33	23	26	34	47	49	.	.
NE15420	UNL-Experimental	.	.	.	.	.	.	.	.	.	.	.	32	32	41	51	63	103	87
NE15624	UNL-Experimental	71	71	73	89	73	80	60	69	42	40	29	32	25	31	55	54	106	82
NE16562	UNL-Experimental	73	63	66	86	68	77	59	57	35	38	24	30	27	33	46	54	.	.
NHH144913-3	UNL-Experimental	80	74	75	88	81	86	76	80	47	39	36	40	26	39	55	63	110	84
NW13493	UNL-Experimental	75	77	80	87	86	84	76	93	40	40	30	27	30	37	44	52	.	.
NW15443	UNL-Experimental	.	.	.	.	91	81	77	87	48	43	29	38	30	36	49	56	.	.
Overland	Husker Genetics	.	.	.	.	90	.	.	.	.	.	.	.	.	.	.	.	.	.

## 2020 WHEAT GRAIN YIELD AT ALL LOCATIONS TESTED (2/2)

Variety	Brand	Washington				Jefferson			Red Willow				Deuel					Box Butte IRR	
		Saunders	SaundersIM	Lancaster		Clay	Harlan		Lincoln	Perkins	Keith		Cheyenne	CheyenneIM	Box Butte RF	Banner	Box Butte IRR	Chase IRR	
Panhandle	Husker Genetics	.	.	.	.	.	.	.	.	.	.	.	36	23	37	50	64	.	.
Pronghorn	Husker Genetics	.	.	.	.	.	.	.	.	.	.	.	27	24	33	48	43	.	.
Robidoux	Husker Genetics	.	.	.	.	.	.	.	69	42	44	30	31	29	32	51	52	89	80
Ruth	Husker Genetics	78	85	86	99	72	72	67	71	43	39	36	35	28	36	46	59	113	.
Scout 66	Check	66	49	52	43	60	62	38	63	33	32	29	26	20	28	46	40	66	59
Settler CL	NuPride Genetics	.	.	.	.	.	.	.	84	45	41	33	36	30	39	52	60	.	.
Siege	NuPride Genetics	72	68	70	89	77	72	60	65	37	32	33	33	26	32	50	56	96	70
Spur	AgriPro Syngenta	.	.	.	.	.	.	.	.	.	.	.	43	39	44	56	62	.	.
SY 517 CL2	AgriPro Syngenta	.	.	.	.	.	.	.	61	39	39	34	32	28	33	53	52	.	.
SY Benefit	AgriPro Syngenta	.	.	.	.	68	78	68	.	.	.	.	.	.	.	.	.	.	.
SY Legend CL2	AgriPro Syngenta	.	.	.	.	.	.	.	76	44	35	32	40	25	36	56	61	.	.
SY Monument	AgriPro Syngenta	.	.	.	.	73	82	76	67	48	45	27	41	26	36	55	59	115	.
SY Rugged	AgriPro Syngenta	.	.	.	.	.	.	.	86	50	42	27	40	24	29	46	59	.	.
SY Sunrise	AgriPro Syngenta	.	.	.	.	.	.	.	87	42	37	26	.	.	.	.	.	106	88
SY Wolverine	AgriPro Syngenta	.	.	.	.	70	82	52	71	43	40	27	33	24	33	54	58	113	80
Tatanka	Kansas Wheat Alliance	.	.	.	.	.	.	.	73	43	45	32	.	.	.	.	.	.	.
Turkey	Check	64	53	52	55	70	59	55	60	31	29	27	22	23	30	43	37	87	53
WB4269	WestBred	72	79	77	81	81	75	77	.	.	.	.	.	.	.	.	.	.	.
WB4303	WestBred	74	71	76	80	76	76	59	.	.	.	.	.	.	.	.	.	120	84
WB4401	WestBred	80	.	.	.	90	.	.	.	.	.	.	.	.	.	.	.	.	.
WB4418	WestBred	.	.	.	.	.	.	.	86	43	40	29	40	28	40	51	60	117	86
WB4462	WestBred	.	.	.	.	.	.	.	87	43	44	40	36	30	42	62	63	.	.
WB4595	WestBred	.	.	.	.	74	84	61	98	49	38	28	40	33	42	56	63	117	92
WB4699	WestBred	58	74	84	99	68	78	94	.	.	.	.	.	.	.	.	.	108	88
WB4792	WestBred	.	.	.	.	80	81	64	83	40	40	46	32	35	43	48	52	96	83
WB-Grainfield	WestBred	.	.	.	.	84	84	90	79	37	45	34	36	28	38	52	59	116	81
Wesley	Husker Genetics	82	77	79	86	77	87	72	73	45	46	33	36	33	39	54	61	113	85
Whistler	PlainsGold	.	.	.	.	.	.	.	.	.	.	.	42	34	46	52	60	.	.
Zenda	Kansas Wheat Alliance	65	64	72	88	74	68	72	.	.	.	.	.	.	.	.	.	.	.

\*Yield values corrected to 12% moisture.

## 2020 WHEAT GRAIN PROTEIN\* AT ALL LOCATIONS TESTED (1/2)

Variety	Brand	Washington				Jefferson			Red Willow				Deuel					Box Butte IRR	
		Saunders	SaundersIM	Lancaster		Clay	Harlan		Lincoln	Perkins	Keith		Cheyenne	CheyenneIM	Box Butte RF	Banner	Box Butte IRR	Chase IRR	
AM Cartwright	AgriMaxx Wheat Co	13.6	14.6	14.4	13.8	13.7	14.9	13.9	.	.	.	.	.	.	.	.	13.5	.	
AM Eastwood	AgriMaxx Wheat Co	.	.	.	.	.	.	.	.	.	.	.	.	.	.	.	13.6	.	
AP 18AX	AgriPro Syngenta	.	.	.	.	.	.	.	11.5	11.5	11.9	.	12.4	13.5	13.9	11.7	13.9	.	.
Breck	PlainsGold	.	.	.	.	.	.	.	.	.	.	.	13.5	13.7	13.8	12.2	15.5	12.8	.
Canvas	PlainsGold	.	.	.	.	.	.	.	10.9	11.9	9.8	.	12.8	13.8	13.6	12.4	14.6	11.8	.
CP7010	CROPLAN by Winfield	13.1	13.9	13.5	12.8	13.3	13.2	13.7	11.8	NA	11.4	.	13.3	13.4	13.8	13.4	14.2	12.3	.
CP7017AX	CROPLAN by Winfield	12.0	13.1	13.3	12.7	12.4	12.2	13.5	11.2	11.6	11.8	.	12.5	13.9	13.6	11.9	14.5	11.7	.
CP7050AX	CROPLAN by Winfield	13.3	15.1	15.2	15.0	13.8	15.5	14.6	12.4	11.7	12.3	.	13.3	14.8	15.6	13.7	15.1	13.1	.
CP7869	CROPLAN by Winfield	12.1	12.5	13.0	12.9	12.4	13.3	12.9	11.9	10.7	11.1	.	12.3	13.5	13.8	13.5	15.0	12.5	.
CP7909	CROPLAN by Winfield	12.1	12.9	13.8	13.3	12.9	13.3	14.2	12.5	11.9	11.3	.	12.3	14.1	14.4	12.5	14.4	12.3	.
Crescent AX	PlainsGold	.	.	.	.	.	.	.	.	11.7	11.5	.	12.2	13.9	14.1	11.5	13.6	.	.
Fortify SF	PlainsGold	.	.	.	.	.	.	.	.	.	.	.	12.9	13.8	13.9	12.6	14.2	13.8	.
Freeman	Husker Genetics	12.0	13.5	13.8	13.5	13.1	13.2	13.9	12.6	10.9	12.1	.	13.2	14.6	14.2	14.3	15.0	.	.
Goodstreak	Husker Genetics	.	.	.	.	.	.	.	.	12.7	13.0	.	14.6	14.9	14.9	14.2	16.0	.	.
Guardian	PlainsGold	.	.	.	.	.	.	.	.	.	.	.	13.0	14.9	15.1	14.4	15.6	.	.
KS Dallas	Kansas Wheat Alliance	.	.	.	.	.	.	.	12.9	11.5	11.6	.	.	.	.	.	.	.	.
KS Western Star	Kansas Wheat Alliance	.	.	.	.	12.6	12.5	13.6	12.1	11.5	11.1	.	.	.	.	.	.	.	.
Langin	PlainsGold	.	.	.	.	.	.	.	.	.	.	.	12.1	13.9	14.0	12.4	14.2	.	.
LCS Chrome	Limagrain Cereal Seeds	.	.	.	.	14.3	13.9	14.1	12.5	12.3	11.9	.	.	.	.	.	.	.	.
LCS Link	Limagrain Cereal Seeds	.	.	.	.	12.5	13.4	13.9	11.8	10.8	11.7	.	12.5	14.3	14.1	13.4	15.0	13.0	.
LCS Valiant	Limagrain Cereal Seeds	12.3	14.4	14.9	15.0	13.6	14.3	15.2	12.5	10.9	10.4	.	13.5	15.2	15.0	12.2	15.1	13.4	.
Long Branch	Dyna-Gro Seed	11.8	13.1	13.2	13.1	12.9	13.1	13.3	11.6	12.0	12.1	.	12.1	13.5	13.8	10.9	14.7	12.0	.
Monarch	PlainsGold	.	.	.	.	.	.	.	.	.	.	.	.	.	.	.	.	11.4	.
NE14434	UNL-Experimental	11.5	13.2	13.6	12.7	13.2	13.2	13.9	12.0	11.8	11.8	.	13.9	14.6	14.7	13.9	14.9	13.6	.
NE14691	UNL-Experimental	.	.	.	.	.	.	.	12.7	11.8	11.3	.	13.3	15.2	14.8	13.4	16.0	.	.
NE14696	UNL-Experimental	.	.	.	.	.	.	.	.	.	.	.	13.3	15.1	14.8	13.4	15.2	.	.
NE15410	UNL-Experimental	.	.	.	.	.	.	.	11.8	11.6	12.6	.	13.5	14.5	15.1	15.2	15.1	.	.
NE15420	UNL-Experimental	.	.	.	.	.	.	.	.	.	.	.	13.7	14.6	14.6	12.7	15.2	13.6	.
NE15624	UNL-Experimental	12.1	14.0	14.2	13.6	13.0	14.0	14.4	13.0	11.8	12.0	.	13.6	14.8	15.1	13.7	15.4	13.1	.
NE16562	UNL-Experimental	11.8	14.3	14.1	13.3	13.4	13.3	14.1	12.9	12.8	12.7	.	13.4	14.7	14.7	14.1	15.9	.	.
NHH144913-3	UNL-Experimental	12.5	13.8	14.2	13.8	13.2	13.4	13.8	12.7	11.5	12.8	.	13.0	14.7	14.5	13.8	15.7	12.9	.
NW13493	UNL-Experimental	12.3	13.4	13.9	13.2	12.9	13.5	13.7	11.6	11.9	11.9	.	13.1	14.4	14.7	14.6	14.5	.	.
NW15443	UNL-Experimental	.	.	.	.	12.7	13.0	13.8	11.8	11.1	11.6	.	12.6	14.3	14.6	13.8	15.1	.	.
Overland	Husker Genetics	.	.	.	.	13.3	.	.	.	.	.	.	.	.	.	.	.	.	.



## 2020 WHEAT GRAIN PROTEIN AT ALL LOCATIONS TESTED (2/2)

Variety	Brand	Washington	Saunders	SaundersIM	Lancaster	Jefferson	Clay	Harlan	Red Willow	Lincoln	Perkins	Keith	Deuel	Cheyenne	CheyenneIM	Box Butte RF	Banner	Box Butte IRR	Chase IRR
Panhandle	Husker Genetics	.	.	.	.	.	.	.	.	.	.	.	14.2	16.0	15.4	13.8	16.4	.	.
Pronghorn	Husker Genetics	.	.	.	.	.	.	.	.	.	.	.	13.7	14.6	14.8	14.3	15.3	.	.
Robidoux	Husker Genetics	.	.	.	.	.	.	.	12.3	12.6	10.9	.	13.7	14.6	14.6	14.1	16.1	14.7	.
Ruth	Husker Genetics	12.2	13.2	13.6	13.1	12.1	13.9	13.4	12.2	11.6	10.7	.	13.4	14.8	14.4	15.5	15.1	13.0	.
Scout 66	Check	13.3	14.8	14.8	15.3	14.5	14.1	14.3	12.8	12.1	10.8	.	12.9	14.0	15.0	13.4	14.4	13.8	.
Settler CL	NuPride Genetics	.	.	.	.	.	.	.	11.6	11.5	10.9	.	13.4	14.5	13.8	13.8	14.5	.	.
Siege	NuPride Genetics	13.2	14.4	14.4	14.1	13.9	14.0	13.9	12.9	12.2	12.5	.	13.0	15.2	15.3	15.0	15.7	13.7	.
Spur	AgriPro Syngenta	.	.	.	.	.	.	.	.	.	.	.	13.0	14.2	14.1	13.7	15.1	.	.
SY 517 CL2	AgriPro Syngenta	.	.	.	.	.	.	.	12.2	11.2	10.9	.	13.7	15.1	14.8	14.5	15.2	.	.
SY Benefit	AgriPro Syngenta	.	.	.	.	12.8	13.5	13.4	.	.	.	.	.	.	.	.	.	.	.
SY Legend CL2	AgriPro Syngenta	.	.	.	.	.	.	.	12.6	12.2	12.8	.	13.4	14.8	14.8	14.7	15.4	.	.
SY Monument	AgriPro Syngenta	.	.	.	.	12.4	12.5	13.0	11.9	11.3	11.6	.	12.7	14.4	14.1	11.8	15.0	12.6	.
SY Rugged	AgriPro Syngenta	.	.	.	.	.	.	.	11.4	10.4	11.1	.	12.4	13.4	13.7	12.4	14.3	.	.
SY Sunrise	AgriPro Syngenta	.	.	.	.	.	.	.	11.9	11.3	11.1	.	.	.	.	.	.	13.6	.
SY Wolverine	AgriPro Syngenta	.	.	.	.	14.0	13.2	15.0	12.1	12.0	11.3	.	13.1	14.7	15.0	14.4	15.2	11.5	.
Tatanka	Kansas Wheat Alliance	.	.	.	.	.	.	.	11.1	10.4	9.7	.	.	.	.	.	.	.	.
Turkey	Check	13.6	15.1	15.6	15.2	14.5	14.3	15.1	13.3	12.7	13.4	.	13.7	15.7	15.9	15.3	16.2	15.3	.
WB4269	WestBred	12.2	12.7	13.0	12.9	13.1	13.5	12.5	.	.	.	.	.	.	.	.	.	.	.
WB4303	WestBred	12.9	13.8	14.5	13.8	13.6	14.0	14.8	.	.	.	.	.	.	.	.	.	13.7	.
WB4401	WestBred	10.8	.	.	.	12.1	.	.	.	.	.	.	.	.	.	.	.	.	.
WB4418	WestBred	.	.	.	.	.	.	.	12.0	11.7	11.7	.	12.9	13.3	13.8	14.3	15.2	12.6	.
WB4462	WestBred	.	.	.	.	.	.	.	12.1	12.3	12.2	.	13.2	13.6	14.7	13.1	14.9	.	.
WB4595	WestBred	.	.	.	.	12.9	12.4	13.2	11.4	10.7	11.0	.	12.4	13.3	13.1	11.9	13.8	12.3	.
WB4699	WestBred	11.5	12.3	12.0	12.0	12.6	12.3	12.3	.	.	.	.	.	.	.	.	.	13.1	.
WB4792	WestBred	.	.	.	.	12.8	12.3	13.4	11.8	10.9	11.8	.	13.1	14.0	13.5	13.7	14.4	13.0	.
WB-Grainfield	WestBred	.	.	.	.	12.7	13.5	12.3	11.7	11.1	11.3	.	13.0	13.9	14.0	13.2	15.0	12.8	.
Wesley	Husker Genetics	12.6	13.7	14.6	13.9	13.3	13.7	14.3	12.0	11.2	11.7	.	13.1	14.8	15.0	13.4	16.0	13.3	.
Whistler	PlainsGold	.	.	.	.	.	.	.	.	.	.	.	12.9	14.3	14.2	14.6	14.6	.	.
Zenda	Kansas Wheat Alliance	12.9	14.3	14.3	13.5	13.9	14.0	13.5	.	.	.	.	.	.	.	.	.	.	.

\*Protein corrected to 14% moisture, the correction factor used in analytical standards.

## 2020 WHEAT BUSHEL WEIGHT AT ALL LOCATIONS TESTED (1/2)

Variety	Brand	Washington				Jefferson			Red Willow				Deuel					Box Butte IRR	
		Saunders	SaundersIM	Lancaster		Clay	Harlan		Lincoln	Perkins	Keith		Cheyenne	CheyenneIM	Box Butte RF	Banner	Box Butte IRR	Chase IRR	
AM Cartwright	AgriMaxx Wheat Co	61	59	60	57	59	60	59	.	.	.	.	.	.	.	.	57	61	
AM Eastwood	AgriMaxx Wheat Co	.	.	.	.	.	.	.	.	.	.	.	.	.	.	.	56	61	
AP 18AX	AgriPro Syngenta	.	.	.	.	.	.	.	57	54	56	56	56	55	58	53	56	.	
Breck	PlainsGold	.	.	.	.	.	.	.	.	.	.	.	57	57	59	55	56	59	63
Canvas	PlainsGold	.	.	.	.	.	.	.	58	55	57	53	57	56	58	53	56	60	62
CP7010	CROPLAN by Winfield	63	63	63	61	61	58	57	58	58	58	50	58	58	60	53	58	58	61
CP7017AX	CROPLAN by Winfield	62	60	60	58	59	59	59	58	53	57	50	56	55	57	52	56	59	62
CP7050AX	CROPLAN by Winfield	62	60	61	59	59	60	59	59	55	59	48	58	57	58	54	59	59	62
CP7869	CROPLAN by Winfield	62	61	62	58	60	61	61	61	56	56	52	55	56	58	51	55	56	62
CP7909	CROPLAN by Winfield	62	61	60	58	60	60	58	55	54	56	48	56	55	57	50	55	57	61
Crescent AX	PlainsGold	.	.	.	.	.	.	.	.	54	56	54	57	56	58	54	57	.	.
Fortify SF	PlainsGold	.	.	.	.	.	.	.	.	.	.	.	55	57	59	53	56	58	.
Freeman	Husker Genetics	61	58	59	56	57	58	56	56	55	53	50	54	53	56	51	53	.	.
Goodstreak	Husker Genetics	.	.	.	.	.	.	.	.	53	54	51	55	56	57	52	57	.	.
Guardian	PlainsGold	.	.	.	.	.	.	.	.	.	.	.	58	56	58	52	56	.	.
KS Dallas	Kansas Wheat Alliance	.	.	.	.	.	.	.	56	56	55	55	.	.	.	.	.	.	.
KS Western Star	Kansas Wheat Alliance	.	.	.	.	60	61	58	55	56	57	55	.	.	.	.	.	.	.
Langin	PlainsGold	.	.	.	.	.	.	.	.	.	.	.	57	55	57	51	55	.	.
LCS Chrome	Limagrain Cereal Seeds	.	.	.	.	59	60	59	59	56	56	52	.	.	.	.	.	.	.
LCS Link	Limagrain Cereal Seeds	.	.	.	.	60	62	61	61	55	57	42	54	56	59	52	55	57	62
LCS Valiant	Limagrain Cereal Seeds	62	61	61	59	60	61	59	57	55	58	50	55	54	56	52	56	59	63
Long Branch	Dyna-Gro Seed	61	59	60	57	58	59	58	58	54	57	47	58	55	58	54	57	58	61
Monarch	PlainsGold	.	.	.	.	.	.	.	.	.	.	.	.	.	.	.	.	58	62
NE14434	UNL-Experimental	60	60	60	57	58	59	57	54	54	56	44	55	53	55	51	53	57	60
NE14691	UNL-Experimental	.	.	.	.	.	.	.	55	55	53	46	53	50	56	52	52	.	.
NE14696	UNL-Experimental	.	.	.	.	.	.	.	.	.	.	.	56	55	56	53	55	.	.
NE15410	UNL-Experimental	.	.	.	.	.	.	.	58	55	55	48	54	55	57	49	55	.	.
NE15420	UNL-Experimental	.	.	.	.	.	.	.	.	.	.	.	56	54	58	52	56	57	62
NE15624	UNL-Experimental	62	60	61	58	59	59	58	57	55	57	51	56	56	59	54	56	57	62
NE16562	UNL-Experimental	61	58	59	56	58	58	57	58	54	53	42	55	52	56	49	52	.	.
NHH144913-3	UNL-Experimental	60	57	57	55	57	55	56	56	53	53	49	52	52	55	51	53	56	58
NW13493	UNL-Experimental	63	62	62	60	61	62	58	57	54	56	51	55	55	57	50	56	.	.
NW15443	UNL-Experimental	.	.	.	.	59	60	58	57	55	56	54	56	53	55	51	56	.	.
Overland	Husker Genetics	.	.	.	.	59	.	.	.	.	.	.	.	.	.	.	.	.	.

## 2020 WHEAT BUSHEL WEIGHT AT ALL LOCATIONS TESTED (2/2)

Variety	Brand																		
		Saline	Saunders	SaundersIM	Washington	Jefferson	Clay	Harlan	Red Willow	Lincoln	Perkins	Keith	Deuel	Cheyenne	CheyenneIM	Box Butte RF	Banner	Box Butte IRR	Chase IRR
Panhandle	Husker Genetics	.	.	.	.	.	.	.	.	.	.	56	54	56	52	54	.	.	
Pronghorn	Husker Genetics	.	.	.	.	.	.	.	.	.	.	57	57	58	54	57	.	.	
Robidoux	Husker Genetics	.	.	.	.	.	.	58	53	55	53	53	55	57	50	53	56	61	
Ruth	Husker Genetics	62	61	61	59	59	61	61	59	52	58	49	55	56	57	52	56	58	.
Scout 66	Check	61	59	60	56	59	55	57	55	54	55	53	57	55	57	51	57	57	59
Settler CL	NuPride Genetics	.	.	.	.	.	.	.	59	55	57	54	55	56	58	51	57	.	.
Siege	NuPride Genetics	63	61	62	60	61	61	60	61	55	57	51	56	55	58	51	55	56	62
Spur	AgriPro Syngenta	.	.	.	.	.	.	.	.	.	.	.	51	53	55	48	55	.	.
SY 517 CL2	AgriPro Syngenta	.	.	.	.	.	.	.	59	54	57	49	55	55	57	53	56	.	.
SY Benefit	AgriPro Syngenta	.	.	.	.	60	62	60	.	.	.	.	.	.	.	.	.	.	.
SY Legend CL2	AgriPro Syngenta	.	.	.	.	.	.	.	59	54	56	52	55	55	58	51	55	.	.
SY Monument	AgriPro Syngenta	.	.	.	.	59	60	59	58	54	54	39	55	54	56	52	55	55	.
SY Rugged	AgriPro Syngenta	.	.	.	.	.	.	.	56	55	55	47	55	56	58	51	57	.	.
SY Sunrise	AgriPro Syngenta	.	.	.	.	.	.	.	58	54	56	53	.	.	.	.	.	58	61
SY Wolverine	AgriPro Syngenta	.	.	.	.	59	61	58	60	54	58	55	58	56	57	53	57	57	62
Tatanka	Kansas Wheat Alliance	.	.	.	.	.	.	.	58	54	57	51	.	.	.	.	.	.	.
Turkey	Check	61	59	60	57	59	56	59	58	53	52	56	55	55	57	52	55	54	60
WB4269	WestBred	61	60	60	56	59	61	60	.	.	.	.	.	.	.	.	.	.	.
WB4303	WestBred	59	58	58	55	58	56	57	.	.	.	.	.	.	.	.	.	56	59
WB4401	WestBred	61	.	.	.	60	.	.	.	.	.	.	.	.	.	.	.	.	.
WB4418	WestBred	.	.	.	.	.	.	.	58	55	55	56	57	55	56	50	56	56	62
WB4462	WestBred	.	.	.	.	.	.	.	60	54	57	49	56	55	58	52	57	.	.
WB4595	WestBred	.	.	.	.	61	62	60	59	57	58	45	56	57	60	55	59	58	64
WB4699	WestBred	60	61	61	58	58	61	59	.	.	.	.	.	.	.	.	.	55	61
WB4792	WestBred	.	.	.	.	60	61	55	54	56	56	48	55	51	58	53	57	60	61
WB-Grainfield	WestBred	.	.	.	.	61	59	61	57	56	57	49	55	55	58	52	56	57	61
Wesley	Husker Genetics	62	61	61	58	59	61	59	58	55	57	45	56	56	57	49	54	57	61
Whistler	PlainsGold	.	.	.	.	.	.	.	.	.	.	.	53	53	55	49	55	.	.
Zenda	Kansas Wheat Alliance	62	61	61	59	60	59	61	.	.	.	.	.	.	.	.	.	.	.

# 2020 WINTER TRITICALE VARIETY TRIALS

## MEAD, LINCOLN AND SIDNEY

Entry Name	Yield (lbs/ac)				Flowering Date (days from Jan. 1)	Plant Height (in)	Forage Dry Matter (%)	Dry Forage Yield (lb/a)
	Mead	Lincoln	Sidney	Average	Lincoln	Lincoln	Mead	Mead
NT19406	3835	4094	1757	3228.7	153.2	41.6	22	2808.2
NT19418	3531	3599	2117	3082.3	152.2	39.5	23	2137.5
NT19416	3107	3567	2038	2904.0	152.3	38.8	23	1975.7
NT19443	3223	4195	1254	2890.7	153.5	43.9	21	3255.3
NT19433	3191	3248	2122	2853.7	151.2	40.3	27	1883.0
NT19426	3146	3472	1906	2841.3	153.3	40.0	22	2106.7
NT12403	3338	3561	1504	2801.0	151.2	42.1	23	2055.8
NT18430	3119	3883	1393	2798.3	153.3	47.4	23	2269.2
NT12404-1	2978	3512	1789	2759.7	151.2	40.7	24	2151.7
NT19428	3390	3490	1323	2734.3	150.7	40.8	26	2466.8
NT14407	3168	3373	1590	2710.3	150.8	43.4	25	2370.1
NT18410	2977	3234	1710	2640.3	152.2	40.4	24	2193.1
NE03T416-1	2986	3274	1635	2631.7	153.7	40.5	23	1845.6
NT19409	3006	3243	1564	2604.3	153.5	41.5	21	2276.8
NT17442	2815	3449	1469	2577.7	153.7	47.9	23	2642.6
NT17441	3079	3485	1128	2564.0	153.3	48.5	24	2859.1
NT19429	2832	3343	1400	2525.0	151.3	40.7	27	2018.2
NT19441	2993	2938	1613	2514.7	153.0	50.8	23	3159.4
NE03T416-3	2849	3239	1304	2464.0	153.3	39.4	22	2170.2
NT19410	2706	3349	1322	2459.0	153.2	42.3	21	2563.2
NT19423	2992	2969	1410	2457.0	152.3	41.8	22	2031.2
NT19442	2551	3078	1669	2432.7	154.0	42.4	20	2166.5
NT19413	2487	3169	1518	2391.3	153.8	42.9	20	2498.1
Overland	2428	3285	1438	2383.7	154.4	31.4	21	1632.1
NT07403	2759	3190	1191	2380.0	150.0	38.1	27	2157.8
NT19434	2849	2714	1205	2256.0	153.0	49.7	25	2666.8
NT441	2279	3000	1404	2227.7	154.2	48.2	22	2695.0
NT14433	2624	2750	1146	2173.3	153.5	49.6	22	2562.8
NT15406	2422	2955	1109	2162.0	150.8	38.0	26	1897.5
NT16402	2861	2290	880	2010.3	150.8	39.0	26	1926.0
<b>Average all entries[1]</b>	<b>2951</b>	<b>5298</b>	<b>1497</b>	<b>2582.0</b>	<b>152.6</b>	<b>42.4</b>	<b>23</b>	<b>2314.7</b>
<b>Least Significant Difference (5%)[2]</b>	<b>454</b>	<b>337</b>	<b>577</b>	<b>NA</b>	<b>0.9</b>	<b>1.9</b>	<b>3</b>	<b>698.0</b>
<b>CV[3]</b>	<b>9.3</b>	<b>6.2</b>	<b>23.3</b>	<b>NA</b>	<b>0.5</b>	<b>4.9</b>	<b>7.7</b>	<b>21.5</b>

[1] Mean performance of all entries in the trial.

[2] For differences between varieties that are equal to or greater than the LSD value, the chance that the difference is significant is 95%.

[3] Coefficient of Variation (CV) indicates the quality of a trial, and lower than 15 indicates a high quality trial. For CV>15, there was higher than expected variability in the field or the data and the results should be used with caution.

## 2020 WINTER BARLEY VARIETY TRIALS MEAD, LINCOLN, NE AND COLBY, KS

Entry Name	Yield (lbs/ac)			Bushel Wt. (lbs/bu)	Winter Survival (10=no damage, 1=all winterkilled)		Flowering Date (After Jan. 1)	Plant Height (in)
	Lincoln	Colby	Average	Colby	Mead	Lincoln	Lincoln	Lincoln
NB17411	3479	5926	4703	49.3	5.0	7.3	148.1	31.0
NB18429	3450	5764	4607	45.8	7.3	8.0	149.2	30.3
NB19420	3512	4953	4233	47.5	8.3	8.9	147.9	33.3
NB14404	3355	5101	4228	46.5	7.0	8.3	147.2	32.3
NB18406	3630	4789	4210	45.4	6.7	8.6	148.6	33.3
NB19434	3436	4950	4193	46.1	7.3	8.6	150.0	31.0
NB11416	3885	4498	4192	44.7	8.0	8.8	146.4	30.0
NB19422	3228	5142	4185	45.7	6.7	8.7	147.3	31.0
NB19406	3214	5140	4177	43.0	6.0	8.8	145.8	30.7
NB14422	3416	4798	4107	43.1	7.0	8.7	146.8	29.0
NB19423	2988	5208	4098	46.4	5.7	7.1	151.6	32.3
NB17431	3563	4602	4083	48.0	6.3	8.2	148.3	33.0
NB15415	3577	4585	4081	48.8	5.7	6.8	147.1	31.3
NB15442	3357	4676	4017	48.1	7.3	8.5	146.3	29.7
NB17409	3179	4815	3997	49.4	4.3	7.7	148.7	31.3
NB11414	2919	5028	3974	45.3	7.3	7.9	149.3	29.7
NB18411	3418	4499	3959	44.6	7.0	8.0	146.4	30.3
NB17401	3229	4641	3935	50.5	5.3	4.9	151.0	35.3
NB16412	3401	4410	3906	46.3	7.7	8.4	146.1	31.0
NB15420	3113	4653	3883	47.2	7.7	7.2	145.3	31.0
NB15417	3215	4280	3748	49.1	5.7	6.9	147.3	30.7
NB12437	3112	4336	3724	43.4	7.7	8.2	147.1	32.0
NB15441	2899	4471	3685	45.8	5.3	7.5	145.2	30.3
NB19433	2313	5027	3670	44.9	6.7	6.6	148.0	30.3
NB19443	2265	4949	3607	47.9	4.3	7.0	150.7	30.0
P-954	2158	5017	3588	46.7	7.0	5.3	149.5	28.0
NB99845	2956	4164	3560	45.6	8.7	8.4	144.3	31.0
NB19417	1890	5167	3529	49.5	6.7	4.8	151.0	26.3
NB19418	2594	4419	3507	46.8	3.0	5.2	152.7	29.3
NB19403	3113	3897	3505	45.7	6.0	7.7	146.8	33.0
NB19442	2996	3947	3472	47.7	6.7	7.5	148.7	30.7
NB17415	2871	3994	3433	47.5	5.0	5.5	149.8	32.0
NB18417	2719	3948	3334	43.5	4.7	6.5	146.8	32.0
NB18416	3014	3610	3312	48.7	5.0	6.7	148.0	33.7
NB18408	2406	4188	3297	45.4	6.0	5.2	148.6	32.7
NB18439	1933	4208	3071	45.2	3.7	4.6	153.8	25.0
NB18422	1955	4181	3068	47.4	4.0	5.0	152.9	28.0
NB18435	2273	3376	2825	-	3.0	4.0	152.0	24.3
NB18401	1658	3713	2686	45.0	4.7	3.8	151.0	26.3
NB19408	1814	3288	2551	47.1	6.7	6.4	148.0	29.0
<b>Average of all entries</b>	<b>2938</b>	<b>4559</b>	<b>3749</b>	<b>46.5</b>	<b>6.1</b>	<b>7.1</b>	<b>148.5</b>	<b>30.5</b>
<b>Least Significant Difference (5%)</b>	<b>591</b>	<b>838</b>	<b>NA</b>	<b>1.5</b>	<b>2.1</b>	<b>1.6</b>	<b>2.2</b>	<b>2.7</b>

# CHEYENNE COUNTY SAWFLY RATINGS WINTER WHEAT VARIETY TRIAL - 2020

Variety	Brand	Sawfly Rating [1] (1=little lodging, 9=severe lodging)
Fortify SF	PlainsGold	1.1
Wesley	Husker Genetics	1.5
WB4792	WestBred	1.7
Spur	AgriPro-Syngenta	1.8
NE14434	UNL-Experimental	2.2
CP7010	CROPLAN by Winfield United	2.2
CP7050AX	CROPLAN by Winfield United	2.4
WB4595	WestBred	2.5
NE15420	UNL-Experimental	2.7
Freeman	Husker Genetics	2.7
CP7969	CROPLAN by Winfield United	3.0
Turkey	Check	3.1
NW13493	UNL-Experimental	3.4
WB4462	WestBred	3.4
Ruth	Husker Genetics	3.5
Settler CL	NuPride Genetics	3.5
Goodstreak	Husker Genetics	3.6
NE15624	UNL-Experimental	3.6
Langin	PlainsGold	3.8
Pronghorn	Husker Genetics	3.8
Siege	NuPride Genetics	3.8
SY Monument	AgriPro-Syngenta	3.8
Whistler	PlainsGold	3.8
Canvas	PlainsGold	4.0
NW15443	UNL-Experimental	4.0
Panhandle	Husker Genetics	4.1
Crescent AX	PlainsGold	4.1
NE16562	UNL-Experimental	4.1
WB4418	WestBred	4.3
Robidoux	Husker Genetics	4.4
SY 517CL2	AgriPro-Syngenta	4.4
SY Legend CL2	AgriPro-Syngenta	4.5
AP 18AX	AgriPro-Syngenta	4.6
CP7017AX	CROPLAN by Winfield United	4.6
NE14696	UNL-Experimental	4.6
LCS Valiant	Limagrain Cereal Seeds	4.8
NE15410	UNL-Experimental	4.9
Guardian	PlainsGold	5.0

TABLE CONTINUED ON NEXT PAGE

## CHEYENNE COUNTY SAWFLY RATINGS WINTER WHEAT VARIETY TRIAL - 2020 (continued)

Variety	Brand	Sawfly Rating (1=little lodging, 9=severe lodging)
LCS Link	Limagrain Cereal Seeds	5.0
NHH144913-3	UNL-Experimental	5.0
Breck	PlainsGold	5.3
WB-Grainfield	WestBred	5.3
NE14691	UNL-Experimental	5.5
Scout 66	Check	5.6
SY Wolverine	AgriPro-Syngenta	5.8
CP7909	CROPLAN by Winfield United	6.1
SY Rugged	AgriPro-Syngenta	6.3
Long Branch	Dyna-Gro Seed	6.4
<b>Average of all entries[2]</b>		<b>3.9</b>
<b>Standard error</b>		<b>0.8</b>

[1] Ratings were collected as a visual scoring of plot stand about one week before harvest where 1 is little lodging due to sawfly and 9 is severe lodging due to sawfly. Data is averaged across the standard and intensively managed trials conducted near Sidney, NE.

[2] Mean performance of all entries in the trial.



# NOTES



---

---

---

---

---

---

---

---

---

---

---

---

---

---

---

---

---

---

---

---

---

---

---

---

---

---







## UNIVERSITY OF NEBRASKA VARIETY TESTING PROGRAM

<http://cropwatch.unl.edu/varietytest>

### **PROVIDED BY**

University of Nebraska-Lincoln Extension  
Institute of Agriculture and Natural Resources  
Department of Agronomy & Horticulture

Extension is a Division of the Institute of Agriculture and Natural Resources at the University of Nebraska-Lincoln cooperating with the Counties and the United States Department of Agriculture.

University of Nebraska-Lincoln Extension educational programs abide with the nondiscrimination policies of the University of Nebraska-Lincoln and the United States Department of Agriculture.

© 2020 University of Nebraska Board of Regents. All rights reserved.

UNIVERSITY OF  
**Nebraska**  
Lincoln